

Genomic DNA from *Mycobacterium leprae*, Strain Thai-53**Catalog No. NR-19352**

This reagent is the tangible property of the U.S. Government.

Product Description: NR-19352 is a preparation of genomic DNA from *Mycobacterium leprae*, strain Thai-53. DNA was extracted from whole bacilli by chloroform/methanol (2:1) extraction in an equal volume of Tris-EDTA buffer. Cell lipids were removed and the delipidated cells were treated with sodium dodecyl sulphate and Proteinase K. Genomic DNA was isolated from contaminating proteins and polysaccharides by organic extraction and precipitation with isopropanol, respectively.

Lot: 2043**Manufacturing Date: 25JAN2017**

Production and QC testing were performed by Colorado State University (CSU). The CSU documentation for lot 17.Mlep.1.24.gDNA.Thai53 is attached.

ATCC®, on behalf of BEI Resources, hereby represents and warrants that the material provided under this certificate has been subjected by the contractor to the tests and procedures specified and that the results described, along with any other data provided in this certificate, are true and accurate to the best of ATCC®'s knowledge.

ATCC® is a trademark of the American Type Culture Collection.

You are authorized to use this product for research use only. It is not intended for human use.



Genomic DNA Quality Control Record

General Information:

Product Lot Number: 17.Mlep.1.24.gDNA.Thai53

Species: *Mycobacterium leprae*

Strain: Thai 53

Production Information:

Tissue ID	Tissue	Tissue wt. (g)	Date produced	Produced by	Amount (mg)
0K36	LIVER	29.2	07.01.2012	JMB	5.77
0K36	LIVER	29.2	07.01.2012	JMB	2.48
3C186	LIVER	37.2	01.29.2013	JNK	14.15
8U74	LIVER	36.5	02.14.2013	AGA	3.44
3V97	LIVER	35.8	02.21.2013	AGA	2.41
8R1	LIVER	24.2	02.26.2013	JNK	3.28
8R1	LIVER	10.5			
3V97	LIVER	33.1	02.28.2013	AGA	4.76
3V97	LIVER	9.4			
3C186	LIVER	14.8	03.06.2013	JNK	12.53
3C186	LIVER	14.8	03.06.2013	JNK	2.44
8U74	LIVER	37.2	03.25.2013	AGA	1.33
9D56	LIVER	19.2	08.01.2013	JNK	0.18

Starting Material: Live Whole Cell 52.77mg *M. leprae* Lot Number: n/a

SOP #: PP042.1 Date Started: 12/01/2016

Notebook pages: PK.gDNA notebook I pgs. 48-65

Quality Control:

A₂₆₀/A₂₈₀ ratio: 1.7 Final concentration 7.0 ug/ml 48 ug total

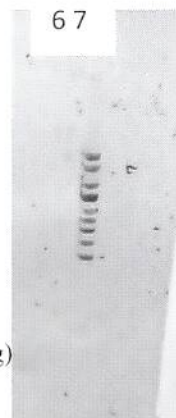
Method used for quantifying/Notebook pgs: 57-65

RE Digest and Gel; PCR Reaction Gel



Lanes:

- 1 1Kb Ladder
- 2 ML0227
- 3 ML0333
- 4 ML0393
- 5 Negative PCR control
- 6 Genomic DNA (0.350 ug)
- 7 Supercoiled Ladder



Aliquots: x24 2ug each



Date 01/25/17

Researcher



Date 01/25/17

Supervisor