

***Streptococcus pyogenes*, Strain ABC020061121**

Catalog No. NR-48707

This reagent is the tangible property of the U.S. Government.

Product Description: *Streptococcus pyogenes* (*S. pyogenes*), strain ABC020061121 was isolated between 2010 and 2012 from the blood of a human with bacteremia, streptococcal toxic shock syndrome or necrotizing fasciitis in the USA. *S. pyogenes*, strain ABC020061121 was deposited as a Group A *Streptococcus* strain.

Lot¹: 70001701

Manufacturing Date: 19JAN2017

TEST	SPECIFICATIONS	RESULTS
Phenotypic Analysis Cellular morphology Colony morphology ² Hemolysis on blood agar ³ Motility (wet mount) Biochemical tests: Catalase VITEK [®] MS (MALDI-TOF)	Gram-positive cocci Report results Report results Report results Negative Consistent with <i>S. pyogenes</i>	Gram-positive cocci Circular, convex, entire, translucent, smooth and cream (Figure 1) β-hemolytic Non-motile Negative <i>S. pyogenes</i> (99.9%)
Genotypic Analysis Sequencing of 16S ribosomal RNA gene (~ 840 base pairs)	≥ 99% sequence identity to <i>S. pyogenes</i> , type strain (GenBank: ATXR01000029)	99.9% sequence identity to <i>S. pyogenes</i> , type strain (GenBank: ATXR01000029)
Purity (post-freeze)⁴	Growth consistent with expected colony morphology	Growth consistent with expected colony morphology
Viability (post-freeze)²	Growth	Growth

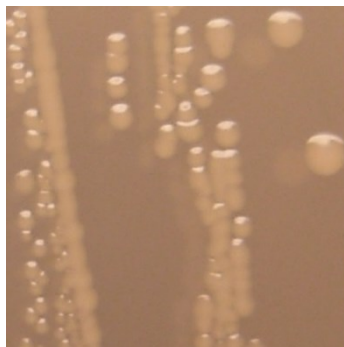
¹NR-48707 was produced by inoculation of the deposited material into Tryptic Soy broth and incubated for 1 day at 37°C in an aerobic atmosphere with 5% CO₂. Broth inoculum was added to Tryptic Soy agar kolles, which were grown for 1 day at 37°C in an aerobic atmosphere with 5% CO₂ to produce this lot.

²1 day at 37°C in an aerobic atmosphere with 5% CO₂ on Tryptic Soy agar

³1 day at 37°C in an aerobic atmosphere with 5% CO₂ on Tryptic Soy agar with 5% defibrinated sheep blood

⁴Purity of this lot was assessed for 7 days at 37°C in an aerobic atmosphere with 5% CO₂ on Tryptic Soy agar.

Figure 1: Colony Morphology



Date: 12 APR 2017

Signature:



BEI Resources Authentication

ATCC®, on behalf of BEI Resources, hereby represents and warrants that the material provided under this certificate has been subjected to the tests and procedures specified and that the results described, along with any other data provided in this certificate, are true and accurate to the best of ATCC®'s knowledge.

ATCC® is a trademark of the American Type Culture Collection.

You are authorized to use this product for research use only. It is not intended for human use.

