

**Streptococcus pyogenes, Strain ABC020060220**

**Catalog No. NR-48704**

**Product Description:** *Streptococcus pyogenes* (*S. pyogenes*), strain ABC020060220 was isolated between 2010 and 2012 from the blood of a human with bacteremia, streptococcal toxic shock syndrome or necrotizing fasciitis in USA. *S. pyogenes*, strain ABC020060220 was deposited as a Group A *Streptococcus* strain.

**Lot<sup>1</sup>: 70001695**

**Manufacturing Date: 25JAN2017**

TEST	SPECIFICATIONS	RESULTS
<b>Phenotypic Analysis</b> Cellular morphology Colony morphology <sup>2</sup>  Hemolysis <sup>3</sup> Motility (wet mount) Biochemical tests: Catalase VITEK <sup>®</sup> MS (MALDI-TOF)	Gram-positive cocci Report results  Report results Report results  Negative Consistent with <i>S. pyogenes</i>	Gram-positive cocci Circular, convex, entire, smooth and cream (Figure 1) β-hemolytic Non-motile  Negative <i>S. pyogenes</i> (99.9%)
<b>Genotypic Analysis</b> Sequencing of 16S ribosomal RNA gene (~ 790 base pairs)	≥ 99% sequence identity to <i>S. pyogenes</i> , strain ABC020060220 (GenBank: JJIW01000002.1)	100% sequence identity to <i>S. pyogenes</i> , strain ABC020060220 (GenBank: JJIW01000002.1)
<b>Purity (post-freeze)<sup>4</sup></b>	Growth consistent with expected colony morphology	Growth consistent with expected colony morphology
<b>Viability (post-freeze)<sup>2</sup></b>	Growth	Growth

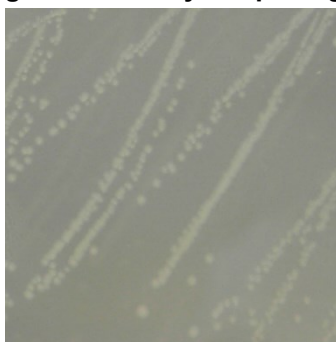
<sup>1</sup>NR-48704 was produced by inoculation of the deposited material into Tryptic Soy broth and incubated for 1 day at 37°C in an aerobic atmosphere with 5% CO<sub>2</sub>. Broth inoculum was added to Tryptic Soy agar kolles, which were grown for 1 day at 37°C in an aerobic atmosphere with 5% CO<sub>2</sub> to produce this lot.

<sup>2</sup>1 day at 37°C in an aerobic atmosphere with 5% CO<sub>2</sub> on Tryptic Soy agar

<sup>3</sup>1 day at 37°C in an aerobic atmosphere with 5% CO<sub>2</sub> on Tryptic Soy agar with 5% defibrinated sheep blood

<sup>4</sup>Purity of this lot was assessed for 7 days at 37°C in an aerobic atmosphere with 5% CO<sub>2</sub> on Tryptic Soy agar.

**Figure 1: Colony Morphology**



**Date:** 04 MAY 2017

**Signature:**



BEI Resources Authentication

ATCC®, on behalf of BEI Resources, hereby represents and warrants that the material provided under this certificate has been subjected to the tests and procedures specified and that the results described, along with any other data provided in this certificate, are true and accurate to the best of ATCC®'s knowledge.

ATCC® is a trademark of the American Type Culture Collection.

You are authorized to use this product for research use only. It is not intended for human use.

