

**Genomic DNA from *Streptococcus anginosus*, Strain F0211**

**Catalog No. HM-282D**

**Product Description:** Genomic DNA was extracted from a preparation of *Streptococcus anginosus* (*S. anginosus*), strain F0211.

**Lot<sup>1,2</sup>: 0002017**

**Manufacturing Date: 07DEC2016**

TEST	SPECIFICATIONS	RESULTS
<b>Sequencing of 16S Ribosomal RNA Gene</b> (~ 1500 base pairs)	≥ 99% sequence identity to <i>S. anginosus</i> , strain F0211 (Genbank: AECT01000011)	100% sequence identity to <i>S. anginosus</i> , strain F0211 (Genbank: AECT01000011)
<b>Agarose Gel Electrophoresis</b>	High molecular weight chromosomal DNA	High molecular weight chromosomal DNA (Figure 1)
<b>Concentration by PicoGreen® Measurement</b>	0.7 to 1.5 µg in 25 to 100 µL per vial	0.9 µg in 41 µL per vial (22 µg/mL)
<b>Functional Activity by PCR Amplification</b> 16S ribosomal RNA gene	~ 1500 base pair amplicon	~ 1500 base pair amplicon
<b>OD<sub>260</sub>/OD<sub>280</sub> Ratio</b>	1.7 to 1.9	1.9
<b>Bacterial Inactivation</b> 10% of total yield plated on Brain Heart Infusion agar and on Tryptic Soy agar with 5% defibrinated sheep blood <sup>3,4</sup>	No viable bacteria detected	No viable bacteria detected

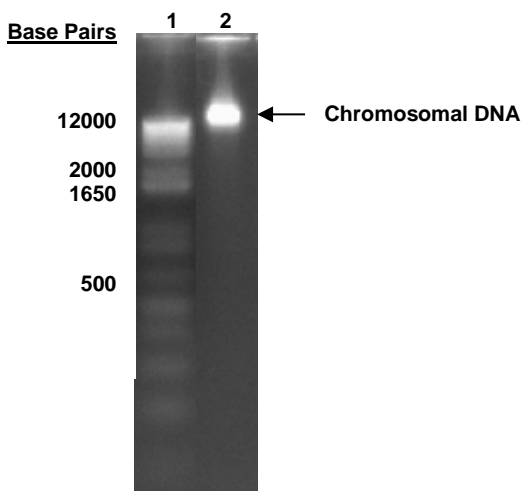
<sup>1</sup>Quality control of HMP organisms used for DNA extraction is only performed to demonstrate that the material produced by BEI Resources is identical to the deposited material. It should not be considered a complete characterization of the deposited organism.

<sup>2</sup>The bacterial preparation used for extraction of genomic DNA was produced by culture of BEI Resources HM-282 (Lot: 59476562). Genomic DNA was extracted using proprietary technology.

<sup>3</sup>13 days at 37°C in an aerobic atmosphere with 5% CO<sub>2</sub>

<sup>4</sup>An extraction procedure was used that has been shown to consistently inactivate 100% of Gram-positive and Gram-negative bacteria.

**Figure 1: Agarose Gel Electrophoresis**



Lane 1: Invitrogen™ TrackIt 1 Kb Plus DNA Ladder™  
Lane 2: 200 ng of HM-282D

## Certificate of Analysis for HM-282D

**Date:** 25 MAY 2017

**Signature:**



BEI Resources Authentication

ATCC®, on behalf of BEI Resources, hereby represents and warrants that the material provided under this certificate has been subjected to the tests and procedures specified and that the results described, along with any other data provided in this certificate, are true and accurate to the best of ATCC®'s knowledge.

ATCC® is a trademark of the American Type Culture Collection.

You are authorized to use this product for research use only. It is not intended for human use.

