

***Bifidobacterium breve*, Strain EX336960VC19**

Catalog No. HM-412

Product Description: *Bifidobacterium breve* (*B. breve*), strain EX336960VC19 was isolated from a human mid-vaginal wall in March 2010 in Richmond, Virginia, USA.

Lot^{1,2}: 70005127

Manufacturing Date: 16JUN2017

TEST	SPECIFICATIONS	RESULTS
Phenotypic Analysis Cellular morphology Colony morphology ³ Motility (wet mount) VITEK [®] MS (MALDI-TOF)	Gram-positive rod Report results Report results <i>B. breve</i>	Gram-positive rod Circular, convex, entire, smooth and gray (Figure 1) Non-motile <i>B. breve</i> (99.9%)
Genotypic Analysis Sequencing of 16S ribosomal RNA gene (~ 810 base pairs)	≥ 99% sequence identity to <i>B. breve</i> type strain (GenBank: ACCG02000012.1)	99.9% sequence identity to <i>B. breve</i> type strain (GenBank: ACCG02000012.1)
Purity (post-freeze) Anaerobic ⁴ Aerobic ⁵	Growth consistent with expected colony morphology Growth consistent with expected colony morphology	Growth consistent with expected colony morphology Growth consistent with expected colony morphology
Viability (post-freeze)³	Growth	Growth

¹Quality control of HMP material is only performed to demonstrate that the material distributed by BEI Resources is identical to the deposited material. It should not be considered a complete characterization of the deposited organism.

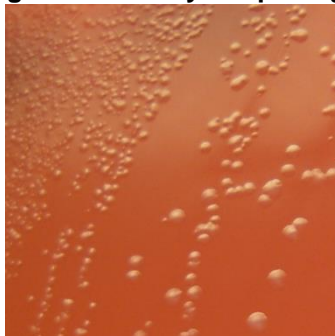
²*B. breve*, strain EX336960VC19 was deposited by Professor Gregory A. Buck, Director, Center for the Study of Biological Complexity, Department of Microbiology and Immunology, Virginia Commonwealth University Medical Center, Richmond, Virginia, USA. Lot 70005127 of HM-412 was produced by inoculation of BEI Resources HMS-412 (Lot: 60110261) into Modified Reinforced Clostridial broth and incubated for 2 days at 37°C in an anaerobic atmosphere (< 0.5% O₂; Remel™ Anaero Pack™). The material from the initial growth was passaged once in Modified Reinforced Clostridial broth for 2 days at 37°C in an anaerobic atmosphere to produce this lot.

³2 days at 37°C in an anaerobic atmosphere on Tryptic Soy agar with 5% defibrinated sheep blood

⁴Purity of this lot was assessed for 7 days at 37°C in an anaerobic atmosphere on Tryptic Soy agar with 5% defibrinated sheep blood

⁵Purity of this lot was assessed for 7 days at 37°C in an aerobic atmosphere with 5% CO₂ on Tryptic Soy agar with 5% defibrinated sheep blood

Figure 1: Colony Morphology



Date: 01 SEP 2017

Signature:



BEI Resources Authentication

ATCC®, on behalf of BEI Resources, hereby represents and warrants that the material provided under this certificate has been subjected to the tests and procedures specified and that the results described, along with any other data provided in this certificate, are true and accurate to the best of ATCC®'s knowledge.

ATCC® is a trademark of the American Type Culture Collection.

You are authorized to use this product for research use only. It is not intended for human use.

