

***Enterococcus faecium*, Strain E417**

Catalog No. HM-965

Product Description: *Enterococcus faecium* (*E. faecium*), strain E417 was isolated in 2006 from human blood in Ecuador.

Lot^{1,2}: 70009679

Manufacturing Date: 11OCT2017

TEST	SPECIFICATIONS	RESULTS
Phenotypic Analysis Cellular morphology Colony morphology ³ Motility (wet mount)	Gram-positive cocci Report results Non-motile	Gram-positive cocci Circular, low convex, entire, smooth and gray (Figure 1) Non-motile
Genotypic Analysis Sequencing of 16S ribosomal RNA gene (~ 750 base pairs)	≥ 99% sequence identity to <i>E. faecium</i> , strain E417 (GenBank: AMBA01000028.1)	100% sequence identity to <i>E. faecium</i> , strain E417 (GenBank: AMBA01000028.1) ⁴
Purity (post-freeze)⁵	Consistent with expected colony morphology	Consistent with expected colony morphology
Viability (post-freeze)³	Growth	Growth

¹Quality control of HMP material is only performed to demonstrate that the material distributed by BEI Resources is identical to the deposited material. It should not be considered a complete characterization of the deposited organism.

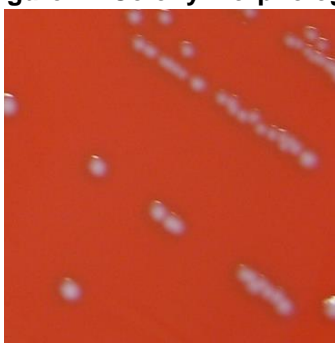
²*E. faecium*, strain E417 was deposited by Cesar A. Arias, Assistant Professor of Medicine, Department of Internal Medicine, The University of Texas Health Science Center at Houston, Houston, Texas, USA. HM-965 lot 70009679 was produced by inoculation of BEI Resources HMS-965 lot 62432863 into Brain Heart Infusion broth and incubated for 1 day at 37°C in an aerobic atmosphere with 5% CO₂. Broth inoculum was added to Tryptic Soy agar kolles with 5% defibrinated sheep blood, which were grown for 1 day at 37°C in an aerobic atmosphere with 5% CO₂ to produce this lot.

³1 day at 37°C in an aerobic atmosphere with 5% CO₂ on Tryptic Soy agar with 5% defibrinated sheep blood

⁴Also consistent with other *Enterococcus* species

⁵Purity of this lot was assessed for 7 days at 37°C in an aerobic atmosphere with 5% CO₂ on Tryptic Soy agar with 5% defibrinated sheep blood.

Figure 1: Colony Morphology



Date: 11 JAN 2018

Signature:

BEI Resources Authentication

ATCC®, on behalf of BEI Resources, hereby represents and warrants that the material provided under this certificate has been subjected by ATCC® to the tests and procedures specified and that the results described, along with any other data provided in this certificate, are true and accurate to the best of ATCC®'s knowledge.

ATCC® is a trademark of the American Type Culture Collection.

You are authorized to use this product for research use only. It is not intended for human use.

