

Genomic DNA from *Acanthamoeba* sp., Strain CDC:V522

Catalog No. NR-50503

Product Description: Genomic DNA was extracted from *Acanthamoeba* sp., Strain CDC:V522, a clinical isolate collected in 2003 from the skin tissue of a male patient in Massachusetts, USA.

Lot¹: 2032

Manufacturing Date: 06JAN2017

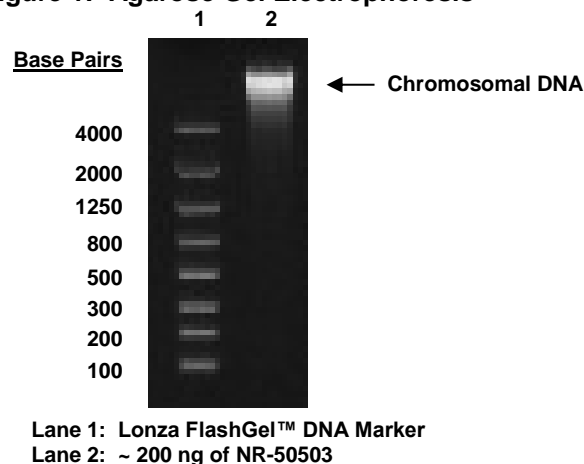
TEST	SPECIFICATIONS	RESULTS
Agarose Gel Electrophoresis	High molecular weight chromosomal DNA	High molecular weight chromosomal DNA (Figure 1)
Content by PicoGreen[®] Measurement	0.5 to 3.5 µg in 25 to 100 µL per vial	1.9 µg in 50 µL per vial (37 µg/mL)
Amount per vial	0.5 to 3.5 µg	1.9 µg
Genotypic Analysis Sequencing of 18S ribosomal RNA gene (~ 300 base pairs)	≥ 99% sequence identity to <i>Acanthamoeba</i> sp., strain CDC:V522 (GenBank: AY703016.1)	100% sequence identity to <i>Acanthamoeba</i> sp., strain CDC:V522 (GenBank: AY703016.1)
PCR Assay of Extracted DNA² 18S ribosomal RNA gene	~ 2100 base pair amplicon	~ 2100 base pair amplicon
OD₂₆₀/OD₂₈₀ Ratio	1.7 to 2.1	1.9
Protozoan Inactivation 10% of total yield inoculated in medium ³	No viable organisms detected	No viable organisms detected

¹NR-50503 was extracted from an established culture of the deposited material that was also used to produce NR-46473 lot 64508702. Genomic DNA was extracted from the organism using proprietary technology.

²Primer sequences and conditions for PCR are available upon request.

³Incubated for 14 days at 30°C in an aerobic atmosphere in Peptone Yeast Glucose medium (ATCC[®] medium 712).

Figure 1: Agarose Gel Electrophoresis



07 MAR 2018

Program Manager or designee, ATCC Federal Solutions

ATCC®, on behalf of BEI Resources, hereby represents and warrants that the material provided under this certificate has been subjected by ATCC® to the tests and procedures specified and that the results described, along with any other data provided in this certificate, are true and accurate to the best of ATCC®'s knowledge.

ATCC® is a trademark of the American Type Culture Collection.
You are authorized to use this product for research use only. It is not intended for human use.

