

**Genomic DNA from *Yersinia pseudotuberculosis*, Strain YPIII (p+)**

**Catalog No. NR-4653**

This reagent is the property of the U.S. Government.

**Product Description:** Genomic DNA was extracted from a preparation of *Yersinia pseudotuberculosis* (*Y. pseudotuberculosis*), strain YPIII (p+). The presence of the virulence plasmid pIB1/pYV in this strain was confirmed by low Ca<sup>2+</sup> response prior to deposition.

**Lot<sup>1</sup>: 70009025**

**Manufacturing Date: 27SEP2017**

TEST	SPECIFICATIONS	RESULTS
<b>Genotypic Analysis</b> Sequencing of 16S ribosomal RNA gene (~ 760 base pairs)	≥ 99% sequence identity to <i>Y. pseudotuberculosis</i> , strain YPIII (GenBank: CP009792.1)	100% sequence identity to <i>Y. pseudotuberculosis</i> , strain YPIII (GenBank: CP009792.1) <sup>2</sup>
<b>Agarose Gel Electrophoresis</b>	High molecular weight chromosomal DNA	High molecular weight chromosomal DNA (Figure 1)
<b>Concentration by PicoGreen<sup>®</sup> Measurement</b>	0.7 to 1.5 µg in 25 to 100 µL per vial	1.0 µg in 31 µL per vial (33 µg/mL)
<b>Amount per vial</b>	0.7 to 1.5 µg	1.0 µg
<b>Functional Activity by PCR Amplification</b> 16S ribosomal RNA gene	~ 1500 base pair amplicon	~ 1500 base pair amplicon
<b>OD<sub>260</sub>/OD<sub>280</sub> Ratio</b>	1.7 to 2.1	1.9
<b>Bacterial Inactivation</b> 10% of total yield plated on agar <sup>3,4</sup>	No viable bacteria detected	No viable bacteria detected

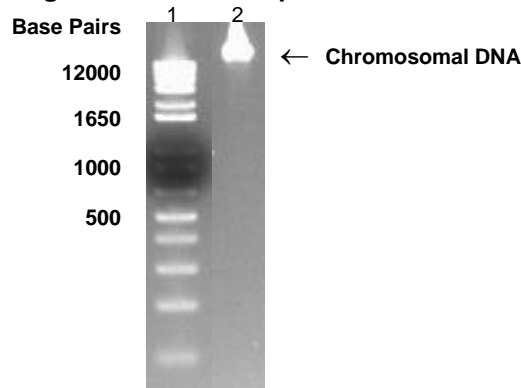
<sup>1</sup>The bacterial preparation used for extraction of genomic DNA was produced from a culture of NR-4380 lot 57852114. Genomic DNA was extracted using proprietary technology.

<sup>2</sup>Also consistent with other *Yersinia* species

<sup>3</sup>14 days at 28°C in an aerobic atmosphere on Tryptic Soy agar.

<sup>4</sup>An extraction procedure was used that has been shown to consistently inactivate 100% of Gram-positive and Gram-negative bacteria.

**Figure 1: Agarose Gel Electrophoresis**



Lane 1: Invitrogen™ TrackIt 1 Kb Plus DNA Ladder™  
Lane 2: 200 ng of NR-4653

02 APR 2018

Program Manager or designee, ATCC Federal Solutions

ATCC®, on behalf of BEI Resources, hereby represents and warrants that the material provided under this certificate has been subjected to the tests and procedures specified and that the results described, along with any other data provided in this certificate, are true and accurate to the best of ATCC®'s knowledge.

ATCC® is a trademark of the American Type Culture Collection.

You are authorized to use this product for research use only. It is not intended for human use.

