

Genomic DNA from *Francisella tularensis* subsp. *novicida*, Strain CG69

Catalog No. NR-3036

Product Description: Genomic DNA was isolated from a preparation of *Francisella tularensis* (*F. tularensis*) subsp. *novicida*, strain CG69.

Lot¹: 7639519

Manufacturing Date: 29SEP2006

TEST	SPECIFICATIONS	RESULTS
Sequencing of 16S Ribosomal RNA Gene (~ 1340 bp)	Identical to BEI Resources NR-581 Identical to GenBank CP000439 Consistent with <i>F. tularensis</i> subsp. <i>novicida</i>	Identical to BEI Resources NR-581 Identical to GenBank CP000439 Consistent with <i>F. tularensis</i> subsp. <i>novicida</i> ²
Agarose Gel Electrophoresis	High molecular weight chromosomal DNA	High molecular weight chromosomal DNA (Figure 1)
Concentration by PicoGreen[®] Measurement	4 to 6 µg in 25 to 100 µL per vial	4.9 µg in 54 µL per vial (90 µg/mL)
Functional Activity by PCR Amplification 16S ribosomal RNA gene Molecular subtyping ^{3,4}	~ 1500 bp amplicon ~ 390 bp amplicon (non-type B)	~ 1500 bp amplicon ~ 390 bp amplicon (non-type B)
OD₂₆₀/OD₂₈₀ Ratio	1.7 to 1.9	1.8
Bacterial Inactivation 10% of total yield plated on Trypticase Soy Agar with 5% sheep blood ^{5,6}	No viable bacteria detected	No viable bacteria detected

¹*F. tularensis* subsp. *novicida*, strain CG69 was extracted from NR-581 (Lot: 4067736) on Difco™ Cystine Heart Agar (BD 247100) with 5% defibrinated rabbit blood. After incubation for 24 hours at 37°C in an aerobic atmosphere with 5% CO₂, genomic DNA was extracted using proprietary technology.

²Also consistent with other *F. tularensis* subspecies.

³Petersen, J. M., et al. "Laboratory Analysis of Tularemia in Wild-Trapped, Commercially Traded Prairie Dogs, Texas, 2002." *Emerg. Infect. Dis.* 10 (2004): 419–425. PubMed: 15109407.

⁴Kugeler, K. J., et al. "Real-time PCR for *Francisella tularensis* Types A and B." *Emerg. Infect. Dis.* 12 (2006): 1799–1801. PubMed: 17283646.

⁵Incubated for 8 days at 37°C and aerobic atmosphere with 5% CO₂.

⁶An extraction procedure was used that has been shown to consistently inactivate 100% of Gram-negative bacteria.

Date: 24 JUL 2007

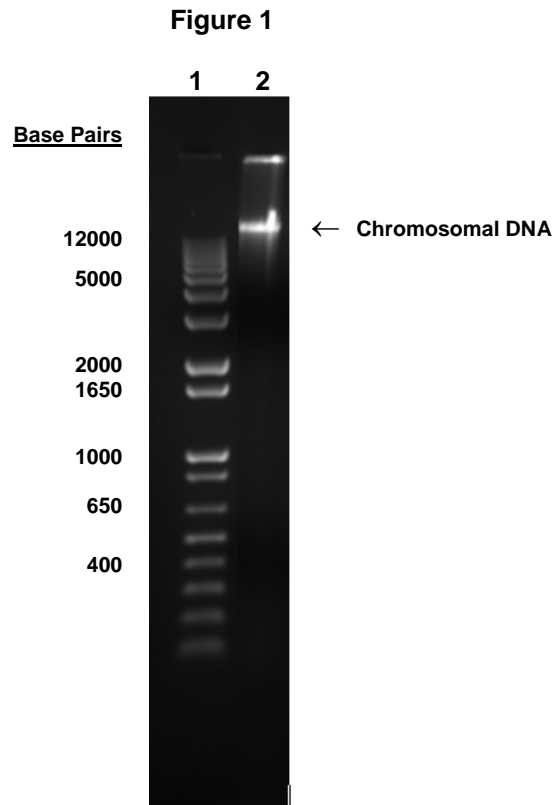
Signature: Signature on File

Title: Technical Manager, BEI Authentication or designee

ATCC[®], on behalf of BEI Resources, hereby represents and warrants that the material provided under this certificate has been subjected to the tests and procedures specified and that the results described, along with any other data provided in this certificate, are true and accurate to the best of ATCC[®]'s knowledge.

ATCC[®] is a trademark of the American Type Culture Collection.

You are authorized to use this product for research use only. It is not intended for human use.



Lane 1: Invitrogen™ TrackIt™ 1 Kb Plus DNA Ladder
Lane 2: 200 ng of NR-3036