

**Genomic DNA from *Listeria marthii*, Strain FSL S4-120**

**Catalog No. NR-9697**

**Product Description:** Genomic DNA was obtained from a preparation of *Listeria marthii* (*L. marthii*), strain FSL S4-120. *L. marthii* is a new species of *Listeria* that was isolated from a soil sample collected at Finger Lakes National Forest, New York.

**Lot<sup>1</sup>: 58077546**

**Manufacturing Date: 22APR2008**

TEST	SPECIFICATIONS	RESULTS
<b>Sequencing of 16S Ribosomal RNA Gene (~ 1410 bp)</b>	Consistent with <i>Listeria</i> species	Consistent with <i>Listeria</i> species <sup>2</sup>
<b>Agarose Gel Electrophoresis</b>	High molecular weight chromosomal DNA	High molecular weight chromosomal DNA (Figure 1)
<b>Concentration by PicoGreen<sup>®</sup> Measurement</b>	4 to 6 µg in 25 to 100 µL per vial	5.8 µg in 102 µL per vial (57.5 µg/mL)
<b>Functional Activity by PCR Amplification</b> 16S ribosomal RNA gene	~ 1500 bp amplicon	~ 1500 bp amplicon
<b>OD<sub>260</sub>/OD<sub>280</sub> Ratio</b>	1.7 to 1.9	1.8
<b>Bacterial Inactivation</b> 10% of total yield plated on Tryptic Soy Agar with 5% sheep blood <sup>3,4</sup>	No viable bacteria detected	No viable bacteria detected

<sup>1</sup>*L. marthii*, strain FSL S4-120 was deposited by Lewis M. Graves, Foodborne and Diarrheal Diseases Branch, Division of Bacterial and Mycotic Diseases, Centers for Disease Control and Prevention, Atlanta, Georgia. The bacterial preparation used for extraction of genomic DNA was produced by broth (Brain Heart Infusion Broth, BD 237500) culture of the deposited material. After incubation for 24 hours at 37°C in an aerobic atmosphere, genomic DNA was extracted using proprietary technology.

<sup>2</sup>*Listeria marthii* is a new species of *Listeria* and is absent from current databases and literature utilized for identification.

<sup>3</sup>7 days at 37°C in an aerobic atmosphere.

<sup>4</sup>An extraction procedure was used that has been shown to consistently inactivate 100% of Gram-negative bacteria.

**Date:** 03 JUL 2008

**Signature:** Signature on File

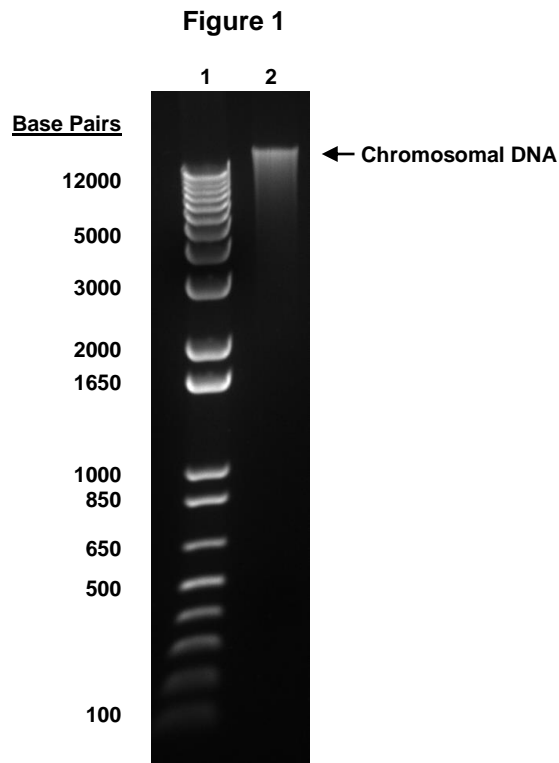
**Title:** Technical Manager, BEI Authentication or designee

ATCC<sup>®</sup>, on behalf of BEI Resources, hereby represents and warrants that the material provided under this certificate has been subjected to the tests and procedures specified and that the results described, along with any other data provided in this certificate, are true and accurate to the best of ATCC<sup>®</sup>'s knowledge.

ATCC<sup>®</sup> is a trademark of the American Type Culture Collection.

You are authorized to use this product for research use only. It is not intended for human use.





Lane 1: Invitrogen™ TrackIt™ 1 Kb Plus DNA Ladder  
Lane 2: 200 ng of NR-9697