

**Genomic DNA from *Yersinia pseudotuberculosis*, Strain YPIII (p-)**

**Catalog No. NR-4652**

This reagent is the property of the U.S. Government.

**Product Description:** Genomic DNA was isolated from a preparation of *Yersinia pseudotuberculosis* (*Y. pseudotuberculosis*), strain YPIII (p-). The absence of the virulence plasmid pIB1/pYV in this strain was confirmed by low Ca<sup>2+</sup> response prior to deposition.

**Lot<sup>1</sup>: 57852120**

**Manufacturing Date: 06SEP2007**

TEST	SPECIFICATIONS	RESULTS
<b>Sequencing of 16S Ribosomal RNA Gene</b> (~ 1390 base pairs)	Consistent with <i>Y. pseudotuberculosis</i>	Consistent with <i>Y. pseudotuberculosis</i> <sup>2</sup>
<b>Agarose Gel Electrophoresis</b>	High molecular weight chromosomal DNA	High molecular weight chromosomal DNA (Figure 1)
<b>Concentration by PicoGreen® Measurement</b>	4 to 6 µg in 25 to 100 µL per vial	5.2 µg in 34 µL per vial (150 µg/mL)
<b>Functional Activity by PCR Amplification</b> 16S ribosomal RNA gene	~ 1500 bp amplicon	~ 1500 bp amplicon
<b>OD<sub>260</sub>/OD<sub>280</sub> Ratio</b>	1.7 to 1.9	1.9
<b>Bacterial Inactivation</b> 10% of total yield plated on Tryptic Soy Agar <sup>3,4</sup>	No viable bacteria detected	No viable bacteria detected

<sup>1</sup>*Y. pseudotuberculosis*, strain YPIII (p-) was deposited by James B. Bliska, Associate Professor from the Department of Molecular Genetics and Microbiology, Center for Infectious Diseases, State University of New York at Stony Brook, Stony Brook, New York. The bacterial preparation used for extraction of genomic DNA was produced by culture of the deposited material on Tryptic Soy Agar. After incubation for 24 hours at 37°C and ambient atmosphere, genomic DNA was extracted using proprietary technology.

<sup>2</sup>Also consistent with other *Yersinia* species.

<sup>3</sup>7 days at 28°C in ambient atmosphere.

<sup>4</sup>An extraction procedure was used that has been shown to consistently inactivate 100% of Gram-negative bacteria.

**Date:** 03 JUL 2008

**Signature:** Signature on File

**Title:** Technical Manager, BEI Authentication or designee

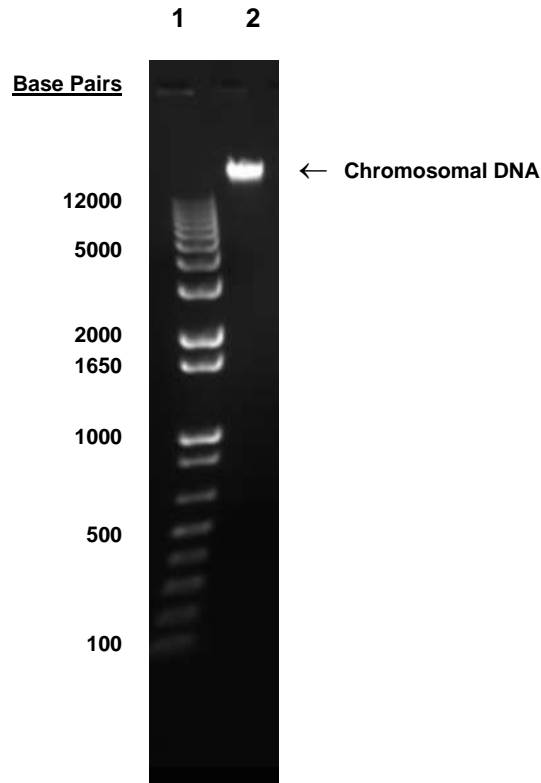
ATCC®, on behalf of BEI Resources, hereby represents and warrants that the material provided under this certificate has been subjected to the tests and procedures specified and that the results described, along with any other data provided in this certificate, are true and accurate to the best of ATCC®'s knowledge.

ATCC® is a trademark of the American Type Culture Collection.

You are authorized to use this product for research use only. It is not intended for human use.



**Figure 1**



Lane 1: Invitrogen™ TrackIt™ 1 Kb Plus DNA Ladder  
Lane 2: 200 ng of NR-4652