

**Coli Surface Protein 1 (CS1) from Enterotoxigenic *Escherichia coli* (0.5 mg)**

**Catalog No. NR-50690**

This reagent is the property of the U.S. Government.

**Product Description:** NR-50690 is a preparation of coli surface protein 1 (CS1) purified from enterotoxigenic *Escherichia coli* (*E. coli*) (ETEC). CS1 was purified from *E. coli*, strain 60R75, grown in DME/F-12 (Dulbecco's Modified Eagle's medium and F-12 serum-free medium) broth in a fermenter. The protein was purified from the culture supernatant by ammonium sulfate precipitation.

**Lot<sup>1</sup>: 05242016-.5**

**Manufacturing Date: 24MAY2016**

TEST	SPECIFICATIONS	RESULTS
Appearance	Report results	Clear
SDS-PAGE (GelCode <sup>®</sup> Blue Stain Reagent)	15 kDa band represents > 95% of total staining intensity above background	15 kDa band represents > 95% of total staining intensity above background (Figure 1)
Confirmation of Identity by Western Blot <sup>2</sup> CS1 (NR-50690)	Reactive	Reactive (Figure 2)
Concentration by Bicinchoninic Acid Protein Assay	Report results	0.5 mg per mL
Endotoxin Content <sup>3</sup>	Report results	0.85 EU per µg protein
Sterility	0.22 µm filter sterilized	0.22 µm filter sterilized
Post-Purification Viability <sup>4</sup>	No growth	No growth

<sup>1</sup>Production and quality control was completed by the Department of Subunit Enteric Vaccines and Immunology (SEVI), Bacterial Diseases Branch, Walter Reed Army Institute of Research, Silver Spring, Maryland, USA.

<sup>2</sup>Using rabbit anti-CS1 serum

<sup>3</sup>Endosafe<sup>®</sup> LAL Assay from Charles River

<sup>4</sup>Presence of bacteria was tested by plating 100 µL of purified protein onto a Tryptic Soy agar plate which was incubated in an aerobic atmosphere at 37°C for 24 hours, in triplicate.

**Figure 1: SDS-PAGE of CS1**

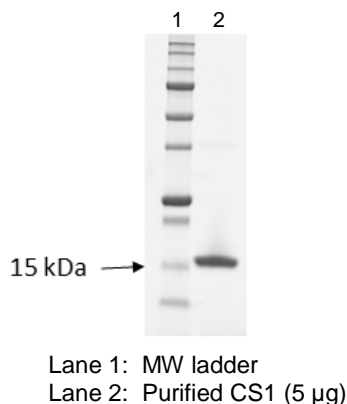
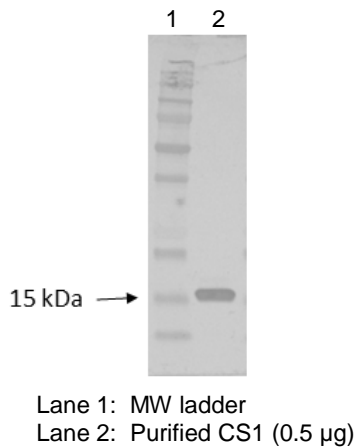


Figure 2: Western Blot of CS1



14 JUN 2018

Program Manager or designee, ATCC Federal Solutions

ATCC®, on behalf of BEI Resources, hereby represents and warrants that the material provided under this certificate has been subjected by the contractor to the tests and procedures specified and that the results described, along with any other data provided in this certificate, are true and accurate to the best of ATCC®'s knowledge.

ATCC® is a trademark of the American Type Culture Collection.  
You are authorized to use this product for research use only. It is not intended for human use.

