

Genomic RNA from Chikungunya Virus, H 20235-St. Martin-2013

Catalog No. NR-50130

Product Description: Genomic RNA was isolated from cell lysate and supernatant from *Cercopithecus aethiops* kidney epithelial cells¹ infected with chikungunya virus (CHIKV), H 20235-St. Martin-2013.

Lot²: 70005272

Manufacturing Date: 22MAR2018

TEST	SPECIFICATIONS	RESULTS
Sequencing of Species-Specific Region (~ 840 nucleotides)	Consistent with CHIKV, H 20235-St. Martin-2013	99.8% identity with CHIKV, H 20235-St. Martin-2013 (GenBank: MG208125.1)
Functional Activity by RT-PCR Amplification³	~ 1070 base pair amplicon	~ 1070 base pair amplicon (Figure 1)
Total RNA Content by RiboGreen[®] Measurement (Viral, Cellular, and Carrier)	Report results	25.4 ng per 100 µL
Viral RNA Content by Droplet Digital RT-PCR	Report results	6.0 × 10 ⁶ copies per µL
Virus Inactivation 10% of total yield inoculated on Vero cells ¹ and evaluated for cytopathic effect and by RT-PCR after serial passage ⁴	No viable virus detected	No viable virus detected

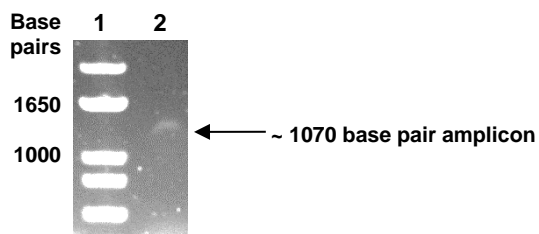
¹Vero E6 cells; ATCC[®] CRL-1586[™]

²Nucleic acid was extracted from a preparation of CHIKV, H 20235-St. Martin-2013 (BEI Resources NR-49901 lot 63965672) using a QIAamp[®] Viral RNA Mini Kit (Qiagen 52906).

³Amplified using iTaq[™] Universal SYBR Green One-step Kit (Bio-Rad 172-5151) with 5 µL of NR-50130 in a 50 µL reaction.

⁴Use of the QIAamp[®] Viral RNA Mini Kit has been demonstrated to consistently inactivate 100% of CHIKV as shown by the absence of cytopathic effect and viral RNA expression by RT-PCR after plating the entire extract on virus-susceptible cells for two passages.

Figure 1: RT-PCR Amplification



Lane 1: Invitrogen[™] TrackIt[™] 1 Kb Plus DNA Ladder
Lane 2: NR-50130

/Heather Couch/
Heather Couch

26 JUL 2018

Program Manager or designee, ATCC Federal Solutions

ATCC[®], on behalf of BEI Resources, hereby represents and warrants that the material provided under this certificate has been subjected to the tests and procedures specified and that the results described, along with any other data provided in this certificate, are true and accurate to the best of ATCC[®]'s knowledge.

ATCC[®] is a trademark of the American Type Culture Collection.
You are authorized to use this product for research use only. It is not intended for human use.

