

Monoclonal Anti-*Trypanosoma cruzi*, Strain Y, Trypomastigote Surface Antigen Ssp-1, Clone 2H11 (produced *in vitro*)

Catalog No. NR-50891

Product Description: Antibody Class: IgG2ak

Mouse monoclonal antibody prepared against the trypomastigote-specific surface antigen Ssp-1 of *Trypanosoma cruzi* (*T. cruzi*), strain Y, clone 2H11 was purified from the hybridoma supernatant by protein G affinity chromatography.

Lot¹: 70010168

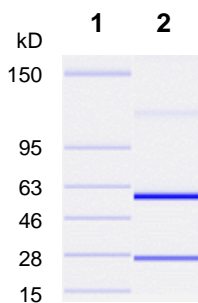
Manufacturing Date: 13MAR2018

TEST	SPECIFICATIONS	RESULTS
Antibody Class Determination	Report results	IgG2ak
Agilent Protein 230 Analysis Average Purity	Correct molecular weight (MW) for heavy and light chains Report results	Correct molecular weight (MW) for heavy and light chains (Figure 1) 94.3% pure
Concentration by Spectrophotometer at OD₂₈₀	≥ 1.0 mg per mL	1.3 mg per mL
Functional Activity by Immunofluorescence Assay² <i>T. cruzi</i> -infected <i>Cercopithecus aethiops</i> kidney epithelial cells with NR-50891 <i>T. cruzi</i> -infected <i>Cercopithecus aethiops</i> kidney epithelial cells with fluorescein isothiocyanate (FITC)-conjugated goat anti-mouse IgG	Reactive Nonreactive	Reactive; immunostaining of amastigotes (Figure 2) Nonreactive; no specific staining of parasites
Sterility	0.22 µm filter-sterilized	0.22 µm filter-sterilized

¹Mouse monoclonal antibody was purified using protein G affinity chromatography from supernatants obtained from mouse hybridoma clone 2C2 adapted to serum-free media.

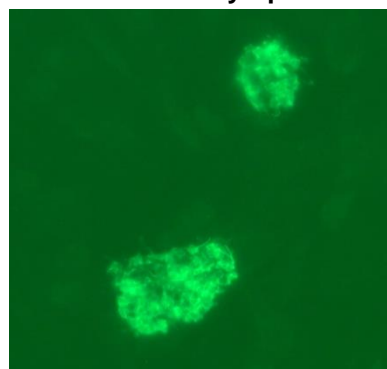
²Specific labeling of *T. cruzi* cells with NR-50891 and FITC was observed after infection of *Cercopithecus aethiops* kidney epithelial cells (ATCC[®] CCL-26[™]) with *T. cruzi* (ATCC[®] PRA-376[™]). NR-50891 was used at a dilution of 1:500, followed by FITC-conjugated goat anti-mouse IgG (Invitrogen[®] A11001) as secondary antibody (1:2000).

Figure 1: Agilent[®] Protein 230 Analysis



Lane 1: Protein 230 Ladder
Lane 2: NR-50891

Figure 2: Immunofluorescence Assay of *T. cruzi*-Infected Kidney Epithelial Cells



/Heather Couch/
Heather Couch

17 AUG 2018

Program Manager or designee, ATCC Federal Solutions

ATCC®, on behalf of BEI Resources, hereby represents and warrants that the material provided under this certificate has been subjected to the tests and procedures specified and that the results described, along with any other data provided in this certificate, are true and accurate to the best of ATCC®'s knowledge.

ATCC® is a trademark of the American Type Culture Collection.

You are authorized to use this product for research use only. It is not intended for human use.

