

***Histoplasma capsulatum*, Strain 7090**

Catalog No. NR-44360

This reagent is the tangible property of the U.S. Government.

Product Description: *Histoplasma capsulatum* (*H. capsulatum*), strain 7090 was isolated in 2000 from a 25-year-old male patient with cutaneous histoplasmosis and history of HIV infection in Caracas, Venezuela.

Lot¹: 62114296

Manufacturing Date: 28AUG2015

TEST	SPECIFICATIONS	RESULTS
Phenotypic Analysis Colony morphologies ^{2,3}	Report results	Colony type 1: Circular, convex, entire, smooth, butyrous and cream (Figure 1A) Colony type 2: Circular, convex, entire, dry, dull, filamentous and cream (Figure 1B)
Genotypic Analysis⁴ Sequencing of partial 18S rRNA gene, internal transcribed spacer (ITS) 1, 5.8S rRNA gene, ITS 2, partial 28S rRNA (~ 570 base pairs) Sequencing of 28S rRNA gene (630 base pairs)	≥ 99% sequence identity to <i>H. capsulatum</i> ≥ 99% sequence identity to <i>H. capsulatum</i>	100% sequence identity to <i>H. capsulatum</i> (GenBank: AB176484.1) 99.7% sequence identity to <i>H. capsulatum</i> (GenBank: KP132279.1)
Purity⁵ Nutrient broth with 0.1% yeast extract; 25°C and 37°C	Broth transparent, no observed bacterial growth	Broth transparent, no observed bacterial growth
Viability (post-freeze)^{2,3}	Growth	Growth

¹NR-44360 was produced by growth of the deposited material on kolles for 14 days at 37°C in an aerobic atmosphere with 5% CO₂. Fungi were harvested from kolles with broth, centrifuged and the supernatant was removed. The fungal pellet was resuspended in 20% glycerol.

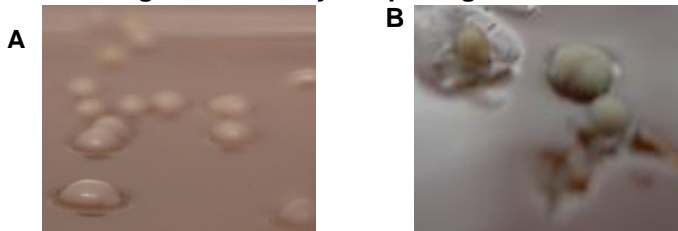
²36 days at 37°C in an aerobic atmosphere with 5% CO₂ on Brain Heart Infusion blood agar kolles

³36 days at 37°C in an aerobic atmosphere with 5% CO₂ on Brain Heart Infusion blood agar plate

⁴Sequencing of both colony types indicated that they were genotypically identical despite the phenotypic differences observed on plates and kolles.

⁵Purity of this lot was evaluated by visual inspection of broth clarity after 36 days in Nutrient broth with 1% yeast at 25°C and 37°C in an aerobic atmosphere with 5% CO₂.

Figure 1: Colony Morphologies



/Heather Couch/
Heather Couch

Program Manager or designee, ATCC Federal Solutions

26 SEP 2018

ATCC®, on behalf of BEI Resources, hereby represents and warrants that the material provided under this certificate has been subjected to the tests and procedures specified and that the results described, along with any other data provided in this certificate, are true and accurate to the best of ATCC®'s knowledge.

ATCC® is a trademark of the American Type Culture Collection.
You are authorized to use this product for research use only. It is not intended for human use.



BEI Resources
www.beiresources.org

E-mail: contact@beiresources.org

Tel: 800-359-7370
Fax: 703-365-2898