

Monoclonal Anti-*Toxoplasma gondii* ROP5 Protein, Clone T5 3E2 (produced *in vitro*)

Catalog No. NR-50266

Product Description: Antibody Class: IgG2ak

Mouse monoclonal antibody prepared against the polymorphic rhoptry protein kinase (ROP) 5 of *Toxoplasma gondii* (*T. gondii*), clone T5 3E2 was purified from the hybridoma supernatant by protein G affinity chromatography.

Lot¹: 70002333

Manufacturing Date: 04AUG2017

TEST	SPECIFICATIONS	RESULTS
Antibody Class Determination	Report results	IgG2ak
Experion Pro260 Analysis Average Purity	Correct molecular weight (MW) for heavy and light chains Report results	Correct molecular weight (MW) for heavy and light chains (Figure 1) 96.6% pure
Concentration by Spectrophotometer at OD₂₈₀	≥ 1.0 mg per mL	1.5 mg per mL
Functional Activity by Immunofluorescence Assay² <i>T. gondii</i> infected human skin fibroblast cells with NR-50266 <i>T. gondii</i> infected human skin fibroblast cells with fluorescein isothiocyanate (FITC)-conjugated goat anti-mouse IgG	Reactive Nonreactive	Reactive; immunostaining of rhoptries within parasitophorous vacuole (Figure 2) Nonreactive; no specific staining of parasites
Sterility	0.22 µm filter-sterilized	0.22 µm filter-sterilized

¹Mouse monoclonal antibody was purified using protein G affinity chromatography from supernatants obtained from mouse hybridoma clone T5 3E2 adapted to serum-free media.

²Specific labeling of *T. gondii* cells with NR-50266 and FITC was observed after infection of human skin fibroblast cells (ATCC[®] CRL-1634[™]) with *T. gondii* (BEI Resources NR-44106 lot 62011373) for 2 days. NR-50266 was used at a dilution of 1:500, followed by FITC-conjugated goat anti-mouse IgG (Invitrogen[®] A16073) as secondary antibody (1:2000). The overlaid 4',6-diamidino-2-phenylindole (DAPI)-stained image is shown in Figure 2B.

Figure 1: Experion Pro260 Analysis

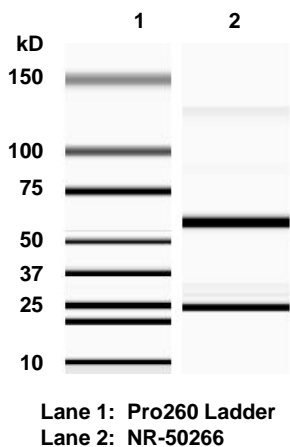
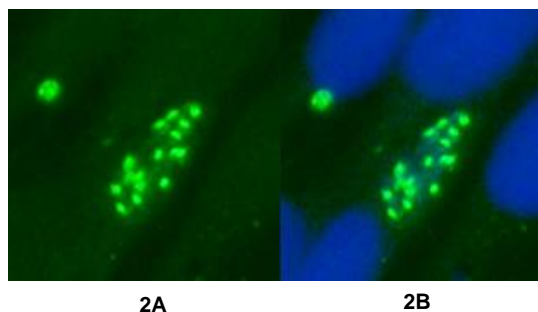


Figure 2: Immunofluorescence Assay of *T. gondii*-Infected Fibroblast Cells



/Heather Couch/
Heather Couch

03 OCT2018

Program Manager or designee, ATCC Federal Solutions

ATCC®, on behalf of BEI Resources, hereby represents and warrants that the material provided under this certificate has been subjected to the tests and procedures specified and that the results described, along with any other data provided in this certificate, are true and accurate to the best of ATCC®'s knowledge.

ATCC® is a trademark of the American Type Culture Collection.

You are authorized to use this product for research use only. It is not intended for human use.

