

**Monoclonal Anti-*Toxoplasma gondii* MIC1 Protein, Clone T10 1F7 (produced *in vitro*)**

**Catalog No. NR-50275**

**Product Description:** Antibody Class: IgG1κ

Mouse monoclonal antibody prepared against the microneme (MIC) protein 1 of *Toxoplasma gondii* (*T. gondii*), clone T10 1F7 was purified from the hybridoma supernatant by protein G affinity chromatography.

**Lot<sup>1</sup>: 70004802**

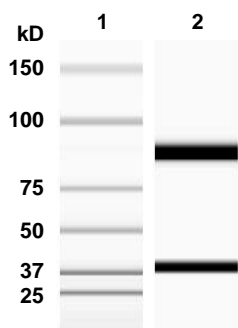
**Manufacturing Date: 17AUG2017**

TEST	SPECIFICATIONS	RESULTS
<b>Antibody Class Determination</b>	Report results	IgG1κ
<b>Experion Pro260 Analysis</b> Average Purity	Correct molecular weight (MW) for heavy and light chains Report results	Correct molecular weight (MW) for heavy and light chains (Figure 1) 98.4% pure
<b>Concentration by Spectrophotometer at OD<sub>280</sub></b>	≥ 1.0 mg per mL	1.5 mg per mL
<b>Functional Activity by Immunofluorescence Assay<sup>2</sup></b> <i>T. gondii</i> infected human skin fibroblast cells with NR 50275 <i>T. gondii</i> infected human skin fibroblast cells with fluorescein isothiocyanate (FITC)-conjugated goat anti-mouse IgG	Reactive Nonreactive	Reactive; immunostaining of micronemes (Figure 2) Nonreactive; no specific staining of parasites
<b>Sterility</b>	0.22 μm filter-sterilized	0.22 μm filter-sterilized

<sup>1</sup>Mouse monoclonal antibody was purified by protein G affinity chromatography from supernatants obtained from mouse hybridoma clone T10 1F7 adapted to serum-free media.

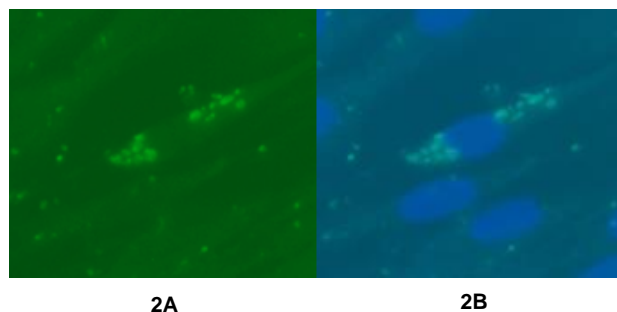
<sup>2</sup>Specific labeling of *T. gondii* cells with NR-50275 and FITC was observed after infection of human skin fibroblast cells (ATCC® CRL-1634™) with *T. gondii* (ATCC® PRA-310™) for 2 days. NR-50275 was used at a dilution of 1:500, followed by FITC-conjugated goat anti-mouse IgG (Invitrogen® A16073) as secondary antibody (1:2000). The overlaid 4',6-diamidino-2-phenylindole (DAPI)-stained image is shown in Figure 2B.

**Figure 1: Experion Pro260 Analysis**



Lane 1: Pro260 Ladder  
Lane 2: NR-50275

**Figure 2: Immunofluorescence Assay of *T. gondii*-Infected Fibroblast Cells**



2A

2B

/Heather Couch/  
Heather Couch

03 OCT 2018

Program Manager or designee, ATCC Federal Solutions

ATCC®, on behalf of BEI Resources, hereby represents and warrants that the material provided under this certificate has been subjected to the tests and procedures specified and that the results described, along with any other data provided in this certificate, are true and accurate to the best of ATCC®'s knowledge.

ATCC® is a trademark of the American Type Culture Collection.

You are authorized to use this product for research use only. It is not intended for human use.

