

Bacillus anthracis* Edema Factor (Native Sequence), Recombinant from *Escherichia coli

Catalog No. NR-13413

This reagent is the property of the U. S. Government.

Product Description: The native protein sequence of *Bacillus anthracis* edema factor (EF) was expressed in *Escherichia coli* and purified by ion exchange chromatography.

Lot: 70007519

Manufacturing Date: 14FEB2018

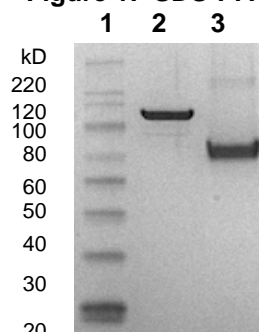
TEST	SPECIFICATIONS	RESULTS
Appearance	Clear and colorless	Clear and colorless
SDS-PAGE (Coomassie blue densitometer scan)	Protein band of interest represents > 90% of total staining intensity	Protein band of ~ 90 kDa represents > 90% of total staining intensity (Figure 1)
Concentration by Bradford Assay ¹	Report results	0.490 mg per mL
Identification by Western Blot ²	Reactive	Reactive (Figure 2)
Enzymatic Activity ³ Rate of conversion of cAMP to ATP in the presence of calmodulin and pyrophosphate	Report results	1.74 × 10 ³ s ⁻¹ mmol ⁻¹ EF
Endotoxin Content (Limulus Amoebocyte Lysate assay)	1 to 10,000 EU per mg	95.10 EU per mg
Filtration	0.2 µm sterile-filtered	0.2 µm sterile-filtered

¹Using BSA as a standard

²Using monoclonal anti-Anthrax edema factor, clone P2E3H4 antibody (BEI Resources NR-15473, lot 58764958; 1:10,000 dilution) and goat anti-mouse IgG-HRP (1:1000 dilution).

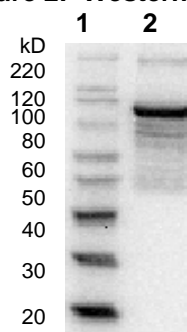
³Arbitrary units

Figure 1: SDS-PAGE



Lane 1: MagicMark™ XP Protein Standard
Lane 2: NR-13413, 1 µg
Lane 3: BSA, 2 µg

Figure 2: Western Blot



Lane 1: MagicMark™ XP Protein Standard
Lane 2: NR-13413, 0.5 µg

/Heather Couch/
Heather Couch

17 OCT 2018

Program Manager or designee, ATCC Federal Solutions

ATCC®, on behalf of BEI Resources, hereby represents and warrants that the material provided under this certificate has been subjected to the tests and procedures specified and that the results described, along with any other data provided in this certificate, are true and accurate to the best of ATCC®'s knowledge.

ATCC® is a trademark of the American Type Culture Collection.

You are authorized to use this product for research use only. It is not intended for human use.

