

Polyclonal Anti-*Mycobacterium tuberculosis* Mpt32 (Gene Rv1860) (antiserum, Rabbit)

Catalog No. NR-13807

This reagent is the tangible property of the U.S. Government.

Product Description:

Antibody Designation: α -RV1860

Polyclonal antiserum to Mpt32 (also referred to as ModD and Apa, alanine and proline rich secreted protein) of *Mycobacterium tuberculosis*, strain H37Rv was produced in rabbits. The antiserum is reported to be active in ELISA and Western Blot assays.

Lot^{1,2}: 61181938

Manufacturing Date: 15JAN2013

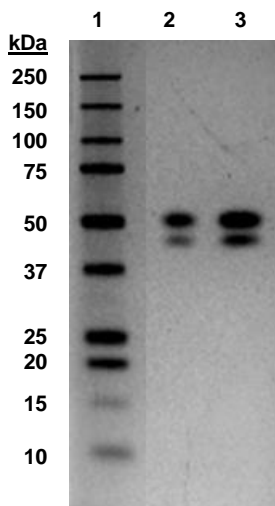
TEST	SPECIFICATIONS	RESULTS
Antibody Class	Report results	IgG _{3K}
SDS-PAGE (Silver Stain)	Report results	Doublet at ~ 50 kDa (Figure 1)
Functional Activity by Western Blot MPT32 (Gene Rv1860) ³	Report results	Reactive (Figure 2)

¹Production and QC testing were performed by Colorado State University (CSU). The CSU documentation for lot 13.anti-Rv1860.1.8.45.rp is attached.

²Retesting of NR-13807 lot 61181938 was performed by BEI Resources in July 2018 to confirm product stability.

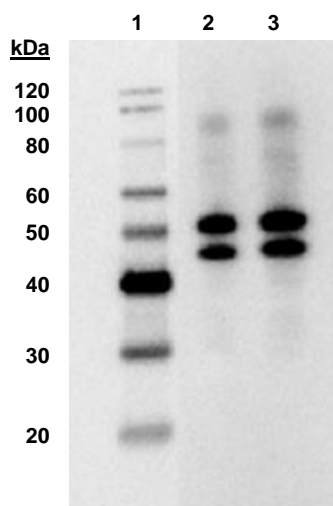
³MPT32/Apa (Gene Rv1860), Purified Native Protein from *Mycobacterium tuberculosis*, Strain H37Rv (BEI Resources, NR-14862)

Figure 1: SDS-PAGE (Silver Stain)



Lane 1: Precision Plus Protein™ Standard
Lane 2: NR-14862, 1 µg
Lane 3: NR-14862, 2 µg

Figure 2: Functional Activity by Western Blot



Lane 1: MagicMark™ XP Protein Standard
Lane 2: NR-14862, 1 µg
Lane 3: NR-14862, 2 µg

/Heather Couch/
Heather Couch

15 NOV 2018

Program Manager or designee, ATCC Federal Solutions

ATCC®, on behalf of BEI Resources, hereby represents and warrants that the material provided under this certificate has been subjected to the tests and procedures specified and that the results described, along with any other data provided in this certificate, are true and accurate to the best of ATCC®'s knowledge.

ATCC® is a trademark of the American Type Culture Collection.

You are authorized to use this product for research use only. It is not intended for human use.



TB Contract Antibody QC Sheet

General Information:

Product: anti-45kDa Rabbit Polyclonal Antibody (Rv1860)
CSU Lot #: 13.anti-Rv1860.1.8.45.rp
Species: *Mycobacterium tuberculosis*
Strain: H37Rv
Type: Rabbit Serum

Production Information:

Cell Line: N/A
Amount of CS Harvested: N/A
IgG Purification: N/A
SOP#: Notebook/pp: N/A
Clarity: clear
SOP#: N/A Notebook/pp: N/A

QC Information:

Tested Against: CFP
Notebook/pp: CA NB#4 pAb pp. 92-98
Titer: 1:25,000
SOP#: SP011
Western blot: ELISA:

Special Instructions: 5ug CFP

QC Western blot:

1. Protein Standard
2. CFP

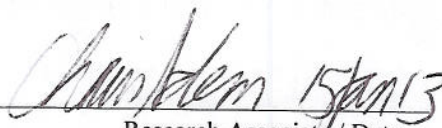
75 →
50 →
37 →
25 →
20 →
15 →
10 →

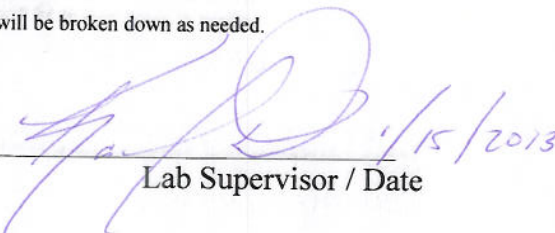


Aliquot Information:

100 aliquots @ 0.1mL
30 aliquots @ 0.1mL
1 aliquot @ 30mL
4 aliquots @ 25mL

Aliquot information reflects aliquots at the time of QC. Bulk vials will be broken down as needed.


Research Associate / Date


Lab Supervisor / Date