

Monoclonal Anti-*Francisella tularensis* Lipoprotein A (LpnA/Tul4), Clone 164.75 (produced *in vitro*)

Catalog No. NR-50326

Product Description: Antibody Class: IgG1k

Mouse monoclonal antibody prepared against lipoprotein A (LpnA/Tul4) of *Francisella tularensis* (*F. tularensis*) was purified from clone 164.75 hybridoma supernatant by protein G affinity chromatography.

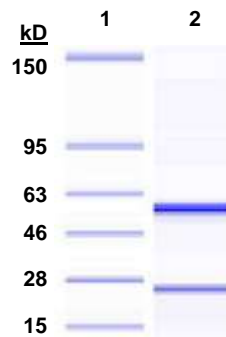
Lot: 70016827

Manufacturing Date: 26OCT2018

TEST	SPECIFICATIONS	RESULTS
Antibody Class Determination	IgG1k	IgG1k
Experion™ Pro260 Analysis	Correct molecular weight for heavy and light chains Report results	Correct molecular weight for heavy and light chains 99.4% pure (Figure 1)
Concentration by Spectrophotometer at OD ₂₈₀	Report results	1.2 mg/mL
Functional Activity by Western Blot <i>F. tularensis</i> subsp. <i>holarctica</i> , LVS (NR-646) ¹ Negative control [Bovine Serum Albumin (BSA)]	Reactive Not reactive	Reactive (Figure 2) Not reactive
Sterility	0.22 µm filter-sterilized	0.22 µm filter-sterilized

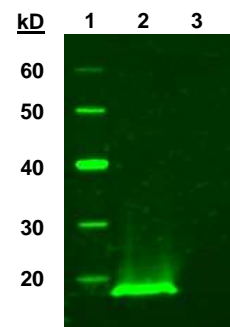
¹A culture of the Live Vaccine Strain (LVS) of *F. tularensis* subsp. *holarctica* (BEI Resources NR-646) was boiled in SDS buffer and utilized for SDS-PAGE followed by western blot with NR-50326 at 1:5000 dilution. The secondary antibody was IRDye 800CW-conjugated goat anti-mouse IgG (H + L) (LI-COR® 926-32210). The western blot was visualized on a LI-COR® Biosciences Odyssey® Infrared Imaging System.

Figure 1: Agilent® Protein 230 Analysis



Lane 1: Agilent® Protein 230 Ladder
Lane 2: NR-50326

Figure 2: Western Blot



Lane 1: Magic Mark™ XP, kDa (Invitrogen™ LC 5602)
Lane 2: NR-50326 with NR-646
Lane 3: Negative control (BSA)

/Heather Couch/

Heather Couch

05 MAR 2019

Program Manager or designee, ATCC Federal Solutions

ATCC®, on behalf of BEI Resources, hereby represents and warrants that the material provided under this certificate has been subjected to the tests and procedures specified and that the results described, along with any other data provided in this certificate, are true and accurate to the best of ATCC®'s knowledge.

ATCC® is a trademark of the American Type Culture Collection.

You are authorized to use this product for research use only. It is not intended for human use.

