

**Genomic DNA from *Leishmania donovani*, Strain 1S (MHOM/SD/62/1S)**

**Catalog No. NR-50465**

**Product Description:** Genomic DNA was extracted from *Leishmania donovani* (*L. donovani*), strain 1S (MHOM/SD/62/1S), which was isolated in 1962 from a patient with visceral leishmaniasis in Sudan.

**Lot<sup>1</sup>: 64541071**

**Manufacturing Date: 01SEP2016**

TEST	SPECIFICATIONS	RESULTS
<b>Agarose Gel Electrophoresis</b>	High molecular weight chromosomal DNA	High molecular weight chromosomal DNA (Figure 1)
<b>Content by PicoGreen<sup>®</sup> Measurement</b>	0.2 to 3.5 µg in 20 to 200 µL per vial	2.9 µg in 32 µL per vial (90 µg/mL)
<b>Amount per Vial</b>	0.2 to 3.5 µg	2.9 µg
<b>Genotypic Analysis</b> Sequencing of Internal transcribed spacer (ITS) 1, 5.8S ribosomal RNA gene (rRNA), ITS 2 (~ 1030 base pairs)	Consistent with <i>L. donovani</i>	Consistent with <i>L. donovani</i> <sup>2</sup>
<b>Functional Activity by PCR Amplification<sup>3</sup></b> ITS 1, 5.8S rRNA gene, ITS 2	~ 1200 base pair amplicon	~ 1200 base pair amplicon
<b>OD<sub>260</sub>/OD<sub>280</sub> Ratio</b>	1.7 to 2.1	1.9
<b>Protozoan Inactivation</b> 10% of total yield inoculated in medium <sup>4</sup>	No viable organisms detected	No viable organisms detected

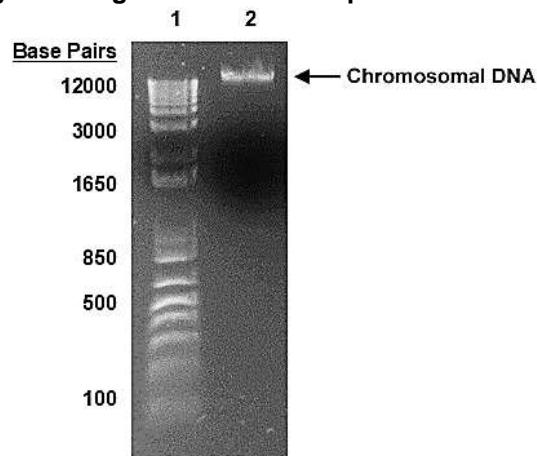
<sup>1</sup>NR-50465 was extracted from a culture of BEI Resources NR-48821 lot 62990852 using proprietary technology. NR-50465 lot 64541071 is provided in 10 mM Tris-HCl, 1 mM EDTA, pH 7.5.

<sup>2</sup>Also consistent with *L. infantum* and *L. chagasi*

<sup>3</sup>Primer sequences and conditions for PCR are available upon request.

<sup>4</sup>Incubated for 14 days at 25°C in an aerobic atmosphere in Modified M199 medium (Lonza 12-109F) supplemented with 10% heat-inactivated fetal bovine serum and 10 µg/mL hemin.

**Figure 1: Agarose Gel Electrophoresis**



Lane 1: Invitrogen™ TrackIt 1 Kb Plus DNA Ladder™  
Lane 2: 200 ng of NR-50465

/Heather Couch/

Heather Couch

05 FEB 2019

Program Manager or designee, ATCC Federal Solutions

ATCC<sup>®</sup>, on behalf of BEI Resources, hereby represents and warrants that the material provided under this certificate has been subjected to the tests and procedures specified and that the results described, along with any other data provided in this certificate, are true and accurate to the best of ATCC<sup>®</sup>'s knowledge.

ATCC<sup>®</sup> is a trademark of the American Type Culture Collection.

You are authorized to use this product for research use only. It is not intended for human use.

