

Genomic DNA from *Mycobacterium africanum*, Strain NLA000017316

Catalog No. NR-49652

Product Description: Genomic DNA was extracted from a preparation of *Mycobacterium africanum* (*M. africanum*), strain NLA000017316. *M. africanum*, strain NLA000017316 was isolated in March 1993 from the sputum of a human patient and was deposited to BEI Resources as an *M. africanum* West African type II strain.

Lot¹: 63954388

Manufacturing Date: 18MAY2017

TEST	SPECIFICATIONS	RESULTS
Genotypic Analysis Sequencing of 16S ribosomal RNA gene (~ 1400 base pairs)	≥ 99% sequence identity to <i>M. africanum</i> type strain (GenBank: AF480605.1)	99.8% sequence identity to <i>M. africanum</i> type strain (GenBank: AF480605.1) ²
Agarose Gel Electrophoresis	High molecular weight chromosomal DNA	High molecular weight chromosomal DNA (Figure 1)
Concentration by PicoGreen[®] Measurement	0.7 to 1.5 µg in 25 to 100 µL per vial	1.0 µg in 74 µL per vial (14 µg/mL)
Amount per vial	0.7 to 1.5 µg	1.0 µg
Functional Activity by PCR Amplification 16S ribosomal RNA gene	~ 1500 base pair amplicon	~ 1500 base pair amplicon
OD₂₆₀/OD₂₈₀ Ratio	1.7 to 2.1	1.7
Bacterial Inactivation 10% of total yield plated on agar ^{3,4}	No viable bacteria detected	No viable bacteria detected

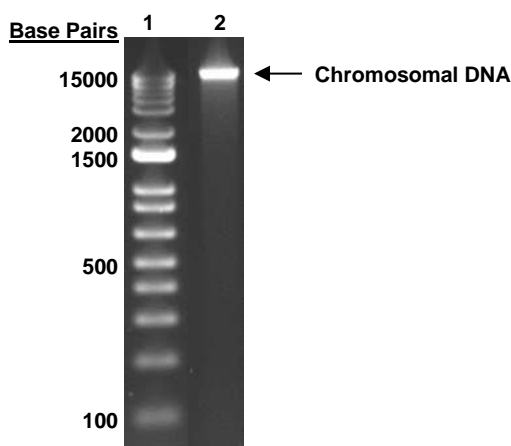
¹The bacterial preparation used for extraction of genomic DNA was produced from the BEI Resources NR-49250 lot 63954333. Genomic DNA was extracted using proprietary technology.

²Also consistent with other *Mycobacterium* species

³45 days at 37°C in an aerobic atmosphere with 5% CO₂ on Middlebrook 7H10 agar with OADC enrichment

⁴An extraction procedure was used that has been shown to consistently inactivate 100% of Gram-positive and Gram-negative bacteria.

Figure 1: Agarose Gel Electrophoresis



Lane 1: Invitrogen™ TrackIt™ 1 Kb Plus DNA Ladder
Lane 2: ~ 200 ng of NR-49652

/Heather Couch/

Heather Couch

03 MAY 2019

Program Manager or designee, ATCC Federal Solutions

ATCC®, on behalf of BEI Resources, hereby represents and warrants that the material provided under this certificate has been subjected to the tests and procedures specified and that the results described, along with any other data provided in this certificate, are true and accurate to the best of ATCC®'s knowledge.

ATCC® is a trademark of the American Type Culture Collection.

You are authorized to use this product for research use only. It is not intended for human use.

