

Mycobacterium tuberculosis*, Strain H37Rv, Purified Sulfolipid-1 (SL-1)*Catalog No. NR-14845**

This reagent is the tangible property of the U.S. Government.

Product Description: NR-14845 is a preparation of purified sulfolipid-1 (SL-1) that was extracted from irradiated *Mycobacterium tuberculosis*, strain H37Rv cells.

Lot: 70021818**Manufacturing Date: 02APR2019**

Production and QC testing were performed by Colorado State University (CSU). The CSU production documentation for lot 19.Rv.04.01.03.SL is attached.

ATCC®, on behalf of BEI Resources, hereby represents and warrants that the material provided under this certificate has been subjected by the contractor to the tests and procedures specified and that the results described, along with any other data provided in this certificate, are true and accurate to the best of ATCC®'s knowledge.

ATCC® is a trademark of the American Type Culture Collection.

You are authorized to use this product for research use only. It is not intended for human use.



WORK SHEET FOR PURIFIED SULFOLIPID (SL)

General Information

BEI Catalog Number: NR-14845
CSU Lot Number: 19.Rv.04.01.03.SL
Species: *M. tuberculosis*
Strain: H37Rv

Purification Information

Starting material: 2:1 total lipid
Lot number: 17.Rv.2.4.19.11.WCg.a
Cells Irradiated: Yes
Viability Test Performed: No Viable Organism Detected
Protocol used (SOP #'s): PP034, SP031, SP032, SP033, SP037
Date started: 2/1/19
Date completed: 4/2/19
Notebook; page(s): TDM/SL Notebook 4 pp 59-67

Quality Control Information:

Total amount of SL: 2.90 mg Date dried on N₂ bath: 4/2/19
TLC date: 4/2/19 Notebook and page(s): TDM/SL Notebook 4 pp 68-71

QC TLC:

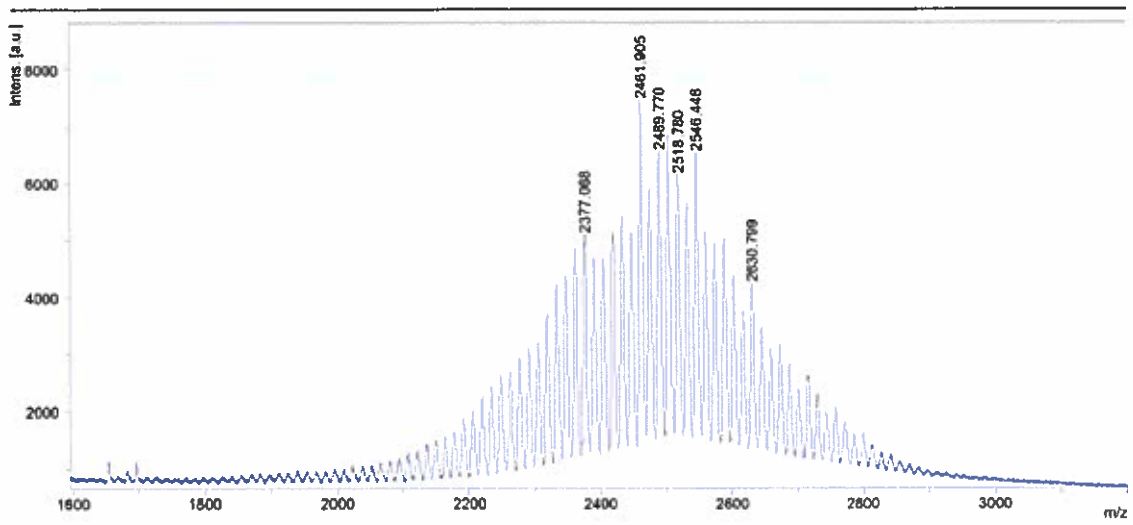


Developed 50 μ g first dimension (left to right) in 100/14/0.8 chloroform/ methanol/ water; second dimension (bottom to top) in 90/10 chloroform/ methanol.

Aliquot Information:

11 x 0.25 mg = 2.75 mg
1 x 0.15 mg = 0.15 mg
2.90 mg

MALDI-TOF:



Loaded 1.0 μ g SL and overlaid with 0.5 μ l DHB matrix and analyzed in negative mode.

Dan W. Desser 4/2/19

(Research Associate) date

C. McHaffey 4-3-19

(Laboratory Supervisor) date