

Genomic DNA from *Leishmania panamensis*, Strain PSC-1 (MHOM/PA/94/PSC-1)

Catalog No. NR-50347

Product Description: Genomic DNA was extracted from *Leishmania panamensis* (*L. panamensis*), strain PSC-1 (MHOM/PA/94/PSC-1), which was isolated in 1994 from an arm skin lesion of a male subject with cutaneous leishmaniasis in Panama.

Lot¹: 70002498

Manufacturing Date: 14JAN2017

TEST	SPECIFICATIONS	RESULTS
Agarose Gel Electrophoresis	High molecular weight chromosomal DNA	High molecular weight chromosomal DNA (Figure 1)
Content by PicoGreen[®] Measurement	0.5 to 3.0 µg in 20 to 200 µL per vial	3.0 µg in 114 µL per vial (27 µg/mL)
Amount per Vial	0.5 to 3.0 µg	3.0 µg
Genotypic Analysis Sequencing of Internal transcribed spacer (ITS) 1, 5.8S ribosomal RNA gene (rRNA), ITS 2 (830 base pairs)	≥ 99% sequence identity to <i>L. panamensis</i> , strain PSC-1 (GenBank: CP009396.1)	100% sequence identity to <i>L. panamensis</i> , strain PSC-1 (GenBank: CP009396.1) ²
Functional Activity by PCR Amplification³ ITS 1, 5.8S rRNA gene, ITS 2	~ 1200 base pair amplicon	~ 1200 base pair amplicon
OD₂₆₀/OD₂₈₀ Ratio	1.7 to 2.1	1.9
Protozoan Inactivation 10% of total yield inoculated in medium ⁴	No viable organisms detected	No viable organisms detected

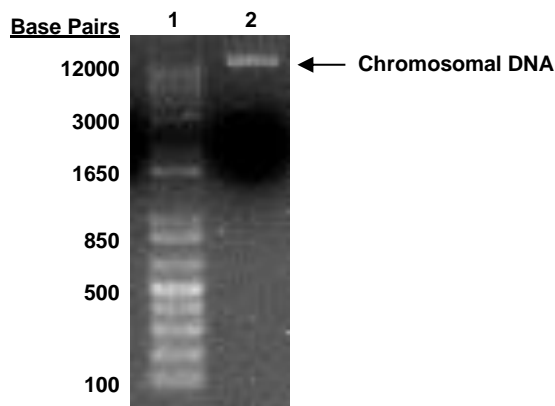
¹NR-50347 was extracted from a culture of BEI Resources NR-50162 lot 64233619 using proprietary technology. NR-50347 lot 70002498 is provided in 10 mM Tris-HCl, 1 mM EDTA, pH 7.5.

²Also consistent with *L. guyanensis*

³Primer sequences and conditions for PCR are available upon request.

⁴Incubated for 14 days at 25°C in an aerobic atmosphere in Modified M199 medium (Sigma M4530) supplemented with 10% heat-inactivated fetal bovine serum and 10 µg/mL hemin.

Figure 1: Agarose Gel Electrophoresis



Lane 1: Invitrogen™ TrackIt™ 1 Kb Plus DNA Ladder
Lane 2: ~ 200 ng of NR-50347

/Heather Couch/
Heather Couch

28 MAY 2019

Program Manager or designee, ATCC Federal Solutions

ATCC®, on behalf of BEI Resources, hereby represents and warrants that the material provided under this certificate has been subjected to the tests and procedures specified and that the results described, along with any other data provided in this certificate, are true and accurate to the best of ATCC®'s knowledge.

ATCC® is a trademark of the American Type Culture Collection.

You are authorized to use this product for research use only. It is not intended for human use.

