

**H7 Hemagglutinin (HA) Protein from Influenza Virus, A/Hunan/02285/2017 (H7N9), Recombinant from Baculovirus**

**Catalog No. NR-51195**

This reagent is the tangible property of the U.S. Government.

**Product Description:**

A recombinant form of the H7 hemagglutinin (HA) protein from influenza A virus, A/Hunan/02285/2017 (H7N9) was produced in Sf9 insect cells using a baculovirus expression system and purified by immobilized metal-affinity chromatography. The recombinant HA protein consists of the HA ectodomain, thrombin cleavage site, T4 foldon trimerization domain and a hexahistidine tag.

**Lot: 70022153**

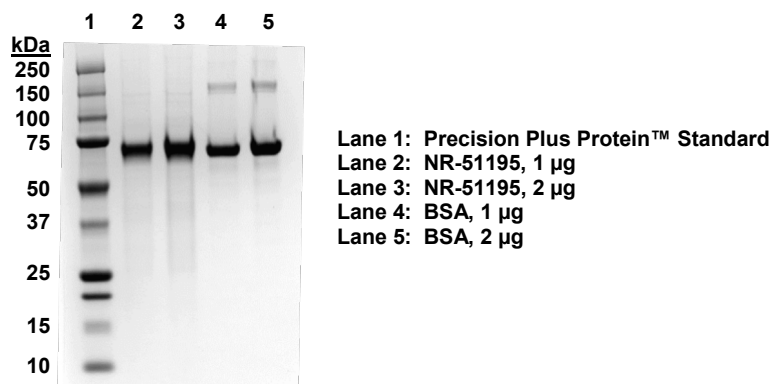
**Manufacturing Date: 17MAY2019**

TEST	SPECIFICATIONS	RESULTS
<b>Appearance</b>	Clear and colorless	Clear and colorless
<b>SDS-PAGE Analysis</b>	Protein band of interest represents > 90% of total staining intensity	Dominant band of ~ 70 kDa accounting for > 90% of total staining intensity (Figure 1)
<b>Protein Concentration by Bradford Assay<sup>1</sup></b>	Report results	227 µg per mL
<b>Final Product</b> Amount per vial Volume per vial	Report results Report results	114 µg 0.5 mL
<b>Functional Activity by Western Blot Analysis</b> Monoclonal anti-histidine tag <sup>2</sup>	Reactive	Reactive (Figure 2)
<b>Endotoxin Content</b> Limulus Amoebocyte Lysate Assay	1 to 1000 EU per mg	< 22.02 EU per mg
<b>Filtration</b>	0.2 µm sterile-filtered	0.2 µm sterile-filtered

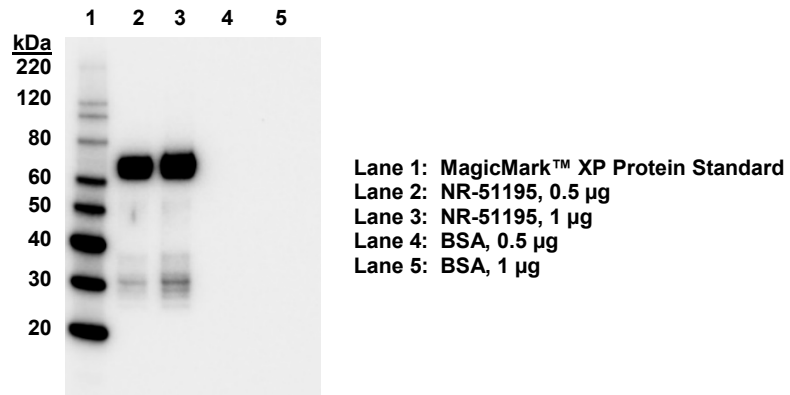
<sup>1</sup>Using bovine serum albumin (BSA) as a standard

<sup>2</sup>R & D Systems® Cat. No. MAB050 (IgG1) (1:2500 dilution)

**Figure 1: SDS-PAGE Analysis of Recombinant H7 HA Protein**



**Figure 2: Western Blot Analysis with Monoclonal Anti-Histidine Tag**



/Heather Couch/  
Heather Couch

22 JUL 2019

Program Manager or designee, ATCC Federal Solutions

ATCC®, on behalf of BEI Resources, hereby represents and warrants that the material provided under this certificate has been subjected to the tests and procedures specified and that the results described, along with any other data provided in this certificate, are true and accurate to the best of ATCC®'s knowledge.

ATCC® is a trademark of the American Type Culture Collection.  
You are authorized to use this product for research use only. It is not intended for human use.

