

Genomic DNA from *Ehrlichia chaffeensis*, Strain St. Vincent

Catalog No. NR-50090

This reagent is the property of the U.S. Government.

Product Description:

Genomic DNA was isolated from a preparation of cell lysate and supernatant from *Canis familiaris* macrophage-monocyte cells (DH82 cells: ATCC® CRL-10389™) infected with *Ehrlichia chaffeensis* (*E. chaffeensis*), strain St. Vincent.

Lot: 70021819¹

Manufacturing Date: 17APR2019

TEST	SPECIFICATIONS	RESULTS
Genotypic Analysis Sequencing of ECH_0849 gene (~ 920 base pairs)	≥ 99% sequence identity to <i>E. chaffeensis</i> , strain St. Vincent (GenBank: CP007478.1)	100% sequence identity to <i>E. chaffeensis</i> , strain St. Vincent (GenBank: CP007478.1) ²
Functional Activity by PCR Amplification ECH_0849 gene	≥ 1000 base pair amplicon; single band	~ 1000 base pair amplicon; single band (Figure 1)
Pre-vial Concentration by PicoGreen® Measurement (Bacterial and Cellular)³	Report results	5.7 ng in 100 µL per vial (0.057 µg/mL)
Estimated Amount per Vial³	Report results	5.7 ng
Bacterial Inactivation 10% of total yield inoculated on DH82 cells and evaluated by IFA ⁴⁻⁶	No viable bacteria detected	No viable bacteria detected

¹The bacterial preparation used for extraction of genomic DNA was produced by culture of NR-46445 lot 62795202. Genomic DNA was extracted using proprietary technology. All QC tests were completed prior to vialing.

²Sequence determined pre-vial

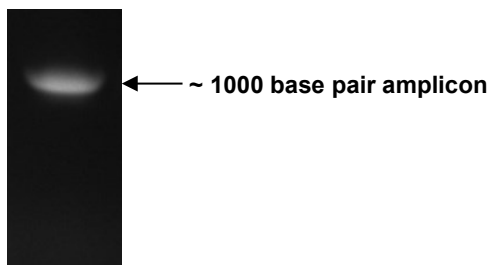
³Measurement is determined pre-vial prior to dilution due to the limit of detection of the quantification method.

⁴14 days at 37°C and 5% CO₂

⁵Using *Ehrlichia chaffeensis* IFA IgG reagent kit (Fuller Laboratories ECHG-120)

⁶An extraction procedure was used that has been shown to consistently inactivate 100% of *E. chaffeensis*.

Figure 1: Functional Activity of NR-50090 by RT-PCR Amplification of ECH_0849 gene



PCR product from 5 µL of NR-50090

/Heather Couch/

Heather Couch

04 SEP 2019

Program Manager or designee, ATCC Federal Solutions

ATCC®, on behalf of BEI Resources, hereby represents and warrants that the material provided under this certificate has been subjected to the tests and procedures specified and that the results described, along with any other data provided in this certificate, are true and accurate to the best of ATCC®'s knowledge.

ATCC® is a trademark of the American Type Culture Collection.

You are authorized to use this product for research use only. It is not intended for human use.

