

***Mycobacterium tuberculosis*, Strain CDC1551, Cell Wall Fraction**

**Catalog No. NR-14829**

This reagent is the tangible property of the U.S. Government.

**Product Description:**

NR-14829 is a preparation of the cell wall fraction of *Mycobacterium tuberculosis*, strain CDC1551 and contains proteins and non-protein compounds such as mAGP.

**Lot: 62976458<sup>1</sup>**

**Manufacturing Date: 18FEB2015**

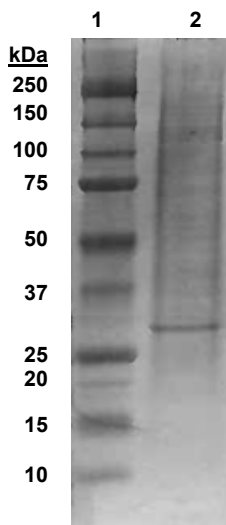
TEST	SPECIFICATIONS	RESULTS
SDS-PAGE (Silver Stain) <sup>2</sup>	Report results	Multiple protein bands visible (Figure 1)
Concentration by Bicinchoninic Acid Protein Assay <sup>2,3</sup>	Report results	~ 7.6 µg per µL

<sup>1</sup>Production and QC testing were performed by Colorado State University (CSU). The CSU documentation for bulk lot 15.CSU93.02.23.CW is attached.

<sup>2</sup>Retesting of NR-14829 lot 62976458 was performed by BEI Resources in July 2019 to confirm product stability.

<sup>3</sup>Using BSA as a standard

**Figure 1: SDS-PAGE and Silver Stain**



Lane 1: Precision Plus Protein™ Standard

Lane 2: NR-14829 lot 62976458, ~ 8 µg

/Heather Couch/

Heather Couch

Program Manager or designee, ATCC Federal Solutions

05 SEP 2019

ATCC®, on behalf of BEI Resources, hereby represents and warrants that the material provided under this certificate has been subjected to the tests and procedures specified and that the results described, along with any other data provided in this certificate, are true and accurate to the best of ATCC®'s knowledge.

ATCC® is a trademark of the American Type Culture Collection.

You are authorized to use this product for research use only. It is not intended for human use.



## WORK SHEET FOR CELL WALL

### General Information

BEI Catalog Number: NR-14829

Product Lot Number: 15.CSU93.02.23.CW

Species: *Mycobacterium tuberculosis*

Strain: CDC1551

### Sonication and Fractionation Information

Starting material (lot #): 14.CSU93.2.4.4.WCg.b

Cell amount (wet weight): 48.8g

SOP #: PP008.3 Notebook pages: PMF/TBVTRM#1, 51

Date of French Press Sonication: 02/11/15; Buffer used: PBS-1mM EDTA with protease inhibitor

Centrifugation Notes: Centrifuged 3x at 27,000xg

Date 10 mM ammonium bicarbonate dialysis started: 02/17/15

date completed: 02/18/15

Notebook; page(s): PMF/TBVTRM#1, 52-53

### Quality Control Information

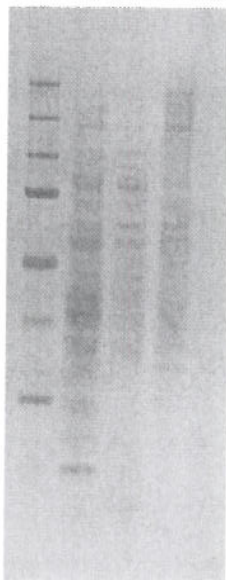
BCA: 9.016  $\mu\text{g}/\mu\text{l}$ . Notebook and page(s): PMF/TBVTRM#1, 54

Total Protein: 505.8 mg

Silver Stain Date: 02/23/15. Notebook and page(s): PMF/TBVTRM#1, 56

### QC Gel:

MEM CYT CW



### Aliquot Information:

35 x 1mg for BEI

20 x 1 mg for IHO

Bulk 50mL @ 9.016 $\mu\text{g}/\mu\text{l}$

C. Mahaffey 02.25.15  
(Research Associate) (date)

[Signature] 2/25/2015  
(Laboratory Supervisor) (date)