

H7 Hemagglutinin (HA) Protein from Influenza A Virus, A/Anhui/1/2013 (H7N9), Recombinant from Baculovirus

Catalog No. NR-44081

This reagent is the tangible property of the U.S. Government.

Product Description:

A recombinant form of the H7 hemagglutinin (HA) protein from influenza A virus, A/Anhui/1/2013 (H7N9) was produced in Sf9 insect cells using a baculovirus expression vector system, purified by nickel affinity chromatography and treated with thrombin to remove a C-terminal hexa-histidine tag.

Lot: 70027297

Manufacturing Date: 08AUG2019

TEST	SPECIFICATIONS	RESULTS
SDS-PAGE Analysis	Protein band of interest represents > 90% of total staining intensity	Dominant band of ~ 65 kDa accounting for > 95% of total staining intensity (Figure 1)
Concentration by Bradford Assay¹	Report results	317 µg per mL
Final Product Amount per vial Volume per vial	Report results Report results	158 µg 500 µL
Functional Activity Hemagglutination activity 0.5% chicken red blood cells 0.5% turkey red blood cells Western blot analysis Polyclonal anti-H7 HA ² Monoclonal anti-histidine tag ³	Report results Report results Reactive Not reactive	Positive Positive Reactive (Figure 2) Not reactive (Figure 3)
Endotoxin Content (Limulus Amoebocyte Lysate Assay)	Report results	< 15.8 EU per mg
Filtration	0.2 µm sterile-filtered	0.2 µm sterile-filtered

¹Using Bovine Serum Albumin (BSA) as standard

²BEI Resources NR-48597, Polyclonal Anti-Influenza Virus H7 Hemagglutinin (HA), A/Anhui/1/2013 (H7N9), (antiserum, Goat) (1:10,000 dilution)

³R&D Systems® (Cat. No. MAB050) (IgG1) (1:1000 dilution)

Figure 1: SDS-PAGE Analysis of Recombinant H7 HA Protein

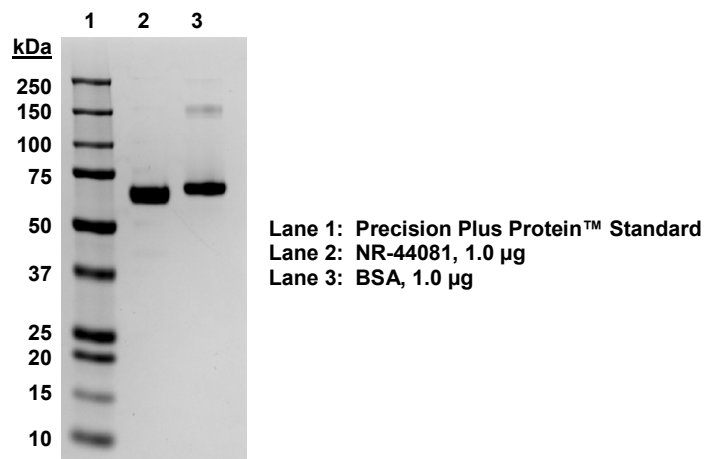


Figure 2: Western Blot Analysis with Polyclonal Anti-H7 HA

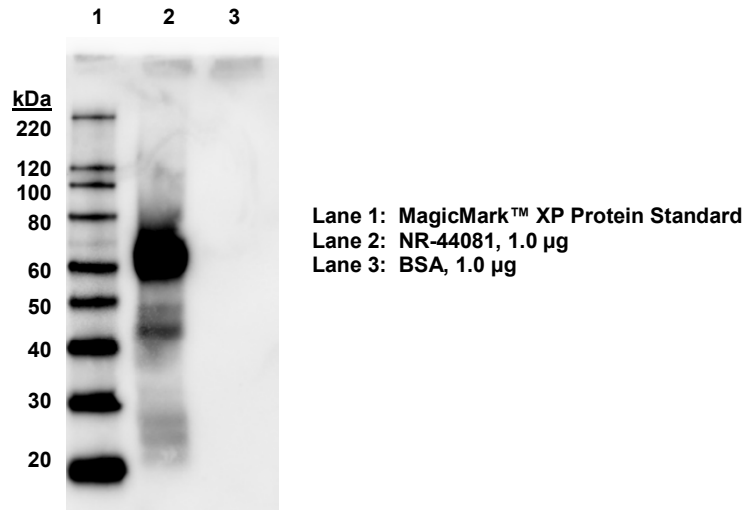
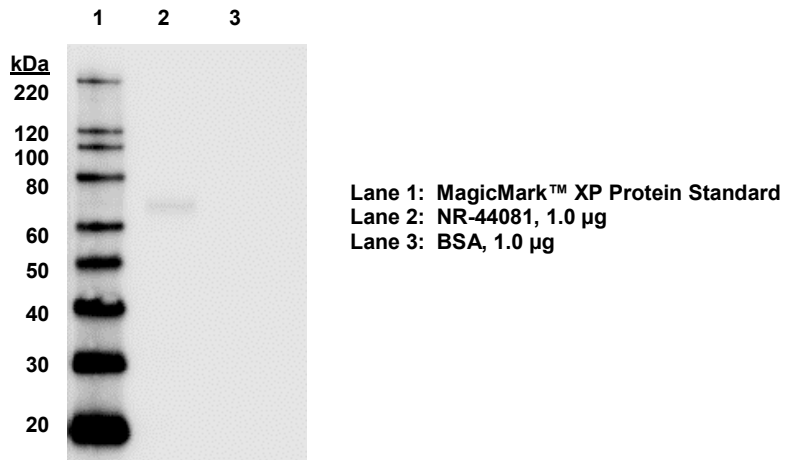


Figure 3: Western Blot Analysis with Monoclonal Anti-His



/Heather Couch/

Heather Couch

23 OCT 2019

Program Manager or designee, ATCC Federal Solutions

ATCC®, on behalf of BEI Resources, hereby represents and warrants that the material provided under this certificate has been subjected by the contributor to the tests and procedures specified and that the results described, along with any other data provided in this certificate, are true and accurate to the best of ATCC®'s knowledge.

ATCC® is a trademark of the American Type Culture Collection.

You are authorized to use this product for research use only. It is not intended for human use.

