

Polyclonal Anti-*Mycobacterium tuberculosis* Whole Cell Lysate (IgG, Rabbit)

Catalog No. NR-51680

This reagent is the tangible property of the U.S. Government.

Product Description:

Antibody Class: IgG

Polyclonal antibody to whole cell lysate of *Mycobacterium tuberculosis*, strain H37Rv was produced in rabbits and purified by protein G affinity chromatography.

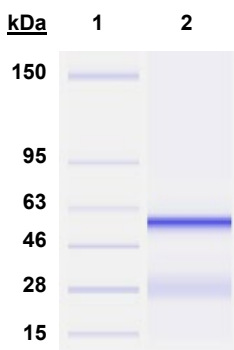
Lot: 70026660

Manufacturing Date: 25OCT2019

TEST	SPECIFICATIONS	RESULTS
Agilent® Protein 230 Analysis Average purity	Correct molecular weight (MW) for heavy and light chains Report purity	Correct molecular weight (MW) for heavy and light chains (Figure 1) 100% pure
Concentration by Spectrophotometer at OD₂₈₀	≥ 1.0 mg per mL	0.92 mg per mL ¹
Functional Activity by Indirect ELISA Whole cell lysate fraction (BEI Resources NR-14822)	Report results	Reactive (Figure 2)
Sterility	0.22 µm filter-sterilized	0.22 µm filter-sterilized

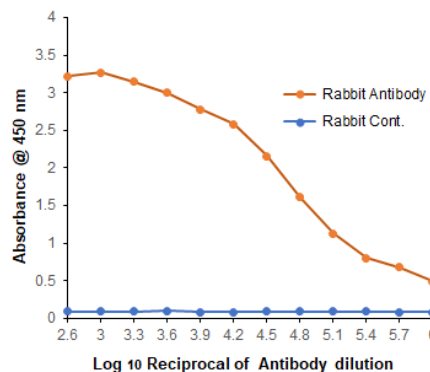
¹The amount of polyclonal antibody in the vial is below the current specification but this does not negatively impact the final product.

Figure 1: Agilent® Protein 230 Analysis



Lane 1: Agilent® Protein 230 Ladder
Lane 2: NR-51680

Figure 2: Indirect ELISA



/Heather Couch/
Heather Couch

Program Manager or designee, ATCC Federal Solutions

11 AUG 2020

ATCC®, on behalf of BEI Resources, hereby represents and warrants that the material provided under this certificate has been subjected to the tests and procedures specified and that the results described, along with any other data provided in this certificate, are true and accurate to the best of ATCC®'s knowledge.

ATCC® is a trademark of the American Type Culture Collection.
You are authorized to use this product for research use only. It is not intended for human use.

