

Envelope Domain III (EDIII) Protein from Powassan Virus, LB with C-Terminal Histidine Tag, Recombinant from Yeast

Catalog No. NR-52391

Product Description:

A recombinant form of the truncated Envelope Domain III (EDIII) protein of the Powassan virus (POWV), LB (GenPept: [NP_775516](#)) was produced in *Komagataella phaffii* (*Pichia pastoris*) expression system, purified using nickel affinity chromatography and vialled in phosphate buffered saline (PBS), pH 7.4. NR-52391 contains residues 301 to 401 of the EDIII protein and features a thrombin cleavage site and a C-terminal octa-histidine tag.

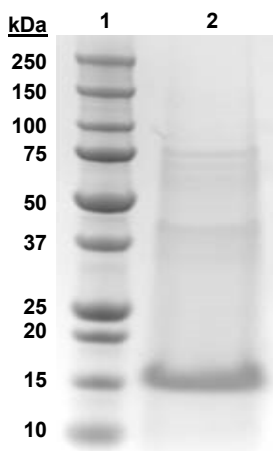
Lot: 70034901

Manufacturing Date: 07APR2020

TEST	SPECIFICATIONS	RESULTS
Appearance	Clear and colorless	Clear and colorless with no particulate matter
SDS-PAGE Analysis (Coomassie Blue)	Protein band of interest represents > 90% of total staining intensity	Protein band of ~ 15 kDa represents > 95% of total staining intensity (Figure 1)
Concentration by Bradford Assay Bovine Serum Albumin (standard)	Report results	0.565 mg per mL
Final Product Amount per vial Volume per vial	Report results Report results	28 µg 50 µL
Functional Activity by Western Blot Analysis Monoclonal anti-histidine tag	Reactive	Reactive (Figure 2) ¹
Sterility	0.22 µm sterile-filtered	0.22 µm sterile-filtered

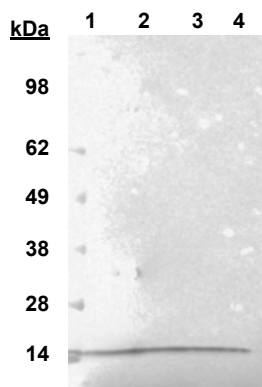
¹Using a 1:500 dilution of mouse monoclonal anti-histidine tag antibody (Santa Cruz Biotechnology cat# sc-8036 HRP).

Figure 1: SDS-PAGE Analysis



Lane 1: Precision Plus Protein™ Standard (5 µL)
Lane 2: NR-52391 (2 µg)

Figure 2: Anti-Histidine Western Blot Analysis



Lane 1: SeeBlue™ Plus2 Protein marker (5 µL)
Lane 2: NR-52391 (2.3 µg)
Lane 3: NR-52391 (1.1 µg)
Lane 4: NR-52391 (0.6 µg)

/Heather Couch/

Heather Couch

01 SEP 2020

Program Manager or designee, ATCC Federal Solutions

ATCC®, on behalf of BEI Resources, hereby represents and warrants that the material provided under this certificate has been subjected to the tests and procedures specified and that the results described, along with any other data provided in this certificate, are true and accurate to the best of ATCC®'s knowledge.

ATCC® is a trademark of the American Type Culture Collection.

You are authorized to use this product for research use only. It is not intended for human use.

