

**Genomic DNA from *Mycobacterium leprae*, Strain Thai-53****Catalog No. NR-19352**

This reagent is the tangible property of the U.S. Government.

**Product Description:**

NR-19352 is a preparation of genomic DNA from heat-killed *Mycobacterium leprae*, strain Thai-53 whole cells derived from infected armadillo liver and spleen tissue.

**Lot: 70023523****Manufacturing Date: 24MAY2019**

---

Production and QC testing were performed by Colorado State University (CSU). The CSU documentation for lot 19.Mlep.5.21.gDNA.Thai53 is attached.

ATCC®, on behalf of BEI Resources, hereby represents and warrants that the material provided under this certificate has been subjected by the contractor to the tests and procedures specified and that the results described, along with any other data provided in this certificate, are true and accurate to the best of ATCC®'s knowledge.

ATCC® is a trademark of the American Type Culture Collection.

You are authorized to use this product for research use only. It is not intended for human use.



## Genomic DNA Quality Control Record

**General Information:**

CSU Lot Number: 19.Mlep.5.21.gDNA.Thai53  
 Species: Mycobacterium leprae  
 Strain: Thai 53

**Production Information:**

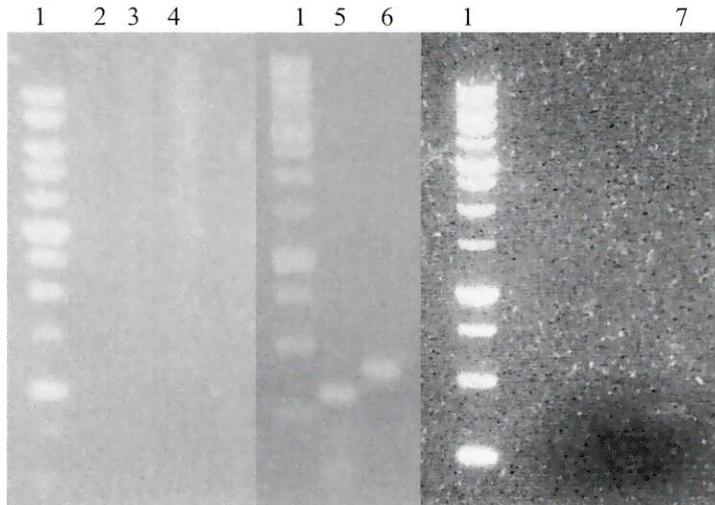
Cap #	Tissue ID	Strain	Date Rec.	Tissue Type	Other Markings	Tissue Information						Amount		
						Tissue Weight liver (g)	Tissue Weight spleen (g)	Date Frxnated	Processor Initials	% tissue	% or # pigment	conc. (mg/ml)	vol. (ml)	Total Yield (mg)
865	9822	Thai-53	03.02.2017	Liver	#1	36.6	x	4.21.2017	AGA	1%	1	7.1	2	14.2
871	9822	Thai-53	03.02.2017	Liver	#4	36.9	x	5.12.2017	AGA	1%	1	5.15	2	10.3
873	9822	Thai-53	03.02.2017	Liver	#5	11	x	5.19.2017	AGA	1%	1	2.67	1	2.67
859	9817	Thai-53	03.02.2017	Liver	#1	38.2	x	3.31.2017	AGA	1%	2	2.94	1	2.94

Starting Material: Live whole cells Lot Number: NA  
 Medium culture grown in: NA Culture size: NA Wet Weight (g): 30.11mg  
 SOP #: PP042.1 Date Started: 04/17/19  
 Notebook pages: PK.gDNA notebook 1 pgs 74-81  
 Notes: NA

**Quality Control:**

A<sub>260</sub>/A<sub>280</sub> ratio: 1.82 Final concentration 35.5ug  
 Method used for quantifying/Notebook pgs: Nanodrop PK.gDNA notebook 1 pg. 78  
 PCR Notebook pgs: PK.gDNA notebook 1 pgs. 79-81  
 Notes: NA

Gel; PCR Reaction Gel



- 1- 1Kb ladder
  - 2- 100ng
  - 3- 200ng
  - 4- 500ng
  - 5- ML0227
  - 6- ML0333
  - 7- ML0393

Aliquotes:  
 x17 2ug  
 x1 1.46ug

 Date: 05/24/19
 Date: 5-24-19  
 Researcher Supervisor