

Candida glabrata, Strain CAB52-4041

Catalog No. HM-1123

Product Description:

Candida glabrata (*C. glabrata*), strain CAB52-4041 was isolated in 2012 from human bronchial washings in St. Louis, Missouri, USA. HM-1123 was produced by inoculation of BEI Resources seed lot 63795190 onto Yeast Mold agar, which was grown for 3 days at 25°C in an aerobic atmosphere. The agar growth was harvested with 20% glycerol to produce this lot. Quality control testing was completed under propagation conditions unless otherwise noted.

Note: Quality control of HMP material is only performed to demonstrate that the material distributed by BEI Resources is identical to the deposited material. It should not be considered a complete characterization of the deposited organism.

Lot: 70041682

Manufacturing Date: 28JAN2021

TEST	SPECIFICATIONS	RESULTS
Phenotypic Analysis Cellular morphology Colony morphology Biochemical tests: VITEK® 2 YST card	Report results Report results <i>C. glabrata</i> (≥ 85%)	Subglobose to elongated with some clumping; no pseudohyphae observed (Figure 1a) Butyrous and off-white (Figure 1b) <i>C. glabrata</i> (99% probability)
Genotypic Analysis Partial sequencing of internal transcribed spacer (ITS) 1, 5.8S ribosomal RNA (rRNA) gene, and ITS 2 (~ 800 base pairs) Sequencing of 28S rRNA gene (~ 800 base pairs)	≥ 99% sequence identity to <i>C. glabrata</i> , type strain (GenBank: CR380958.2) ≥ 99% sequence identity to <i>C. glabrata</i> , type strain (GenBank: CR380958.2)	99.5% sequence identity to <i>C. glabrata</i> , type strain (GenBank: CR380958.2) 99.8% sequence identity to <i>C. glabrata</i> , type strain (GenBank: CR380958.2)
Purity (post-freeze) Nutrient broth with 0.1% Yeast Extract at 25°C 4 days at 25°C in an aerobic atmosphere Nutrient broth with 0.1% Yeast Extract at 37°C 4 days at 25°C in an aerobic atmosphere	No bacterial growth No bacterial growth	No bacterial growth No bacterial growth
Viability (post-freeze) 4 days at 25°C in an aerobic atmosphere on Yeast Mold agar	Growth	Growth

Figure 1a: Cellular Morphology

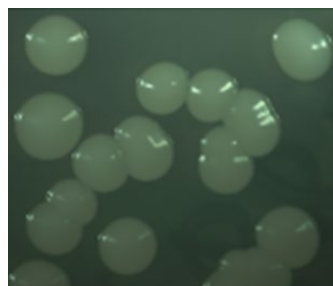


Figure 1b: Colony Morphology



/Heather Couch/

Heather Couch

19 MAR 2021

Program Manager or designee, ATCC Federal Solutions

ATCC®, on behalf of BEI Resources, hereby represents and warrants that the material provided under this certificate has been subjected to the tests and procedures specified and that the results described, along with any other data provided in this certificate, are true and accurate to the best of ATCC®'s knowledge.

ATCC® is a trademark of the American Type Culture Collection.

You are authorized to use this product for research use only. It is not intended for human use.

