

Spike Glycoprotein S1 Domain from SARS-Related Coronavirus 2, N501Y Variant with C-Terminal Histidine Tag, Recombinant from HEK293 Cells

Catalog No. NR-55417

ACROBiosystems Catalog No. S1N-C52Hg

Product Description:

A recombinant form of the spike (S) glycoprotein S1 domain from severe acute respiratory syndrome-related coronavirus 2 (SARS-CoV-2), N501Y variant was produced by transient transfection in human embryonic kidney HEK293 cells and purified by affinity chromatography and buffer exchange. NR-55417 lacks the signal sequence, contains 670 residues of the SARS-CoV-2 S glycoprotein (amino acid residues V16 to R685) and features a C-terminal poly-histidine tag. NR-55417 is a variant of SARS-CoV-2 which contains the N501Y mutation in the S glycoprotein as compared to the SARS-CoV-2 reference sequence (GenPept: [QHD43416](#)). NR-55417 lot 4352-211UF1-W9 was lyophilized from 278 µL bulk protein in phosphate-buffered saline, pH 7.4 with 10% trehalose.

Lot: 4352-211UF1-W9

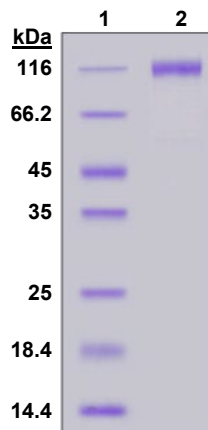
Receipt Date: 13MAY2021

TEST	SPECIFICATIONS	RESULTS
Appearance	White powder	White powder
SDS-PAGE Analysis	Protein band of interest represents > 90% of total staining intensity	Dominant band of ~ 120 kDa represents > 90% of total staining intensity (Figure 1) ¹
Final Product Amount per vial	Report results	100 µg
Functional Activity by ELISA	Reactive	Reactive ²
Filtration	0.2 µm sterile-filtered	0.2 µm sterile-filtered
Endotoxin Content (Limulus Amoebocyte Lysate Assay)	< 1.0 EU per µg	< 1.0 EU per µg

¹The recombinant protein migrated to a slightly larger size than was expected, likely caused by glycosylation common in recombinant spike proteins derived from coronaviruses. For more information, please see Chakraborti, S., et al. "The SARS Coronavirus S Glycoprotein Receptor Binding Domain: Fine Mapping and Functional Characterization." *Virology*, 2 (2005): 73. PubMed: 16122388.

²Using 2 µg per mL of immobilized NR-55417 to bind human ACE2, Fc tag (ACROBiosystems Cat. No. AC2-H5257) with a linear range of 0.1 to 3 ng per mL

Figure 1: SDS-PAGE Analysis



Lane 1: Protein Standard
Lane 2: NR-55417

/Heather Couch/

Heather Couch

12 JUL 2021

Program Manager or designee, ATCC Federal Solutions

ATCC®, on behalf of BEI Resources, hereby represents and warrants that the material provided under this certificate has been subjected by the contributor to the tests and procedures specified and that the results described, along with any other data provided in this certificate, are true and accurate to the best of ATCC®'s knowledge.

ATCC® is a trademark of the American Type Culture Collection.

You are authorized to use this product for research use only. It is not intended for human use.

