

Genomic DNA from *Staphylococcus aureus*, Strain HIP13170

Catalog No. NR-51364

Product Description:

Genomic DNA was extracted from a preparation of *Staphylococcus aureus* (*S. aureus*), strain HIP13170. The bacterial preparation used for extraction of genomic DNA was produced by culture of BEI Resources NR-46412 lot 62471638. Genomic DNA was extracted using proprietary technology.

Lot: 70018061

Manufacturing Date: 19OCT2018

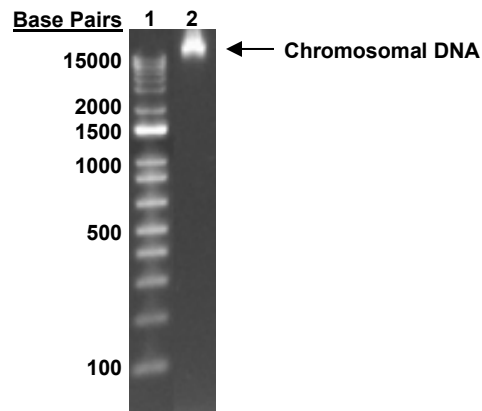
TEST	SPECIFICATIONS	RESULTS
Genotypic Analysis Sequencing of 16S ribosomal RNA gene (~ 1450 base pairs)	≥ 99% sequence identity to <i>S. aureus</i> , strain HIP13170 (GenBank: AHBM01000010.1)	99.9% sequence identity to <i>S. aureus</i> , strain HIP13170 (GenBank: AHBM01000010.1) ¹
Presence of Plasmids Confirmed by PCR-RFLP² <i>vanA</i> restriction fragment 1 <i>vanA</i> restriction fragment 2 <i>vanA</i> restriction fragment 3 <i>vanA</i> restriction fragment 4	~ 230 base pair amplicon ~ 180 base pair amplicon ~ 160 base pair amplicon ~ 130 base pair amplicon	~ 230 base pair amplicon ~ 180 base pair amplicon ~ 160 base pair amplicon ~ 130 base pair amplicon
Agarose Gel Electrophoresis	High molecular weight chromosomal DNA	High molecular weight chromosomal DNA (Figure 1)
Concentration by PicoGreen[®] Measurement	0.7 to 1.5 µg in 25 to 100 µL per vial	1.0 µg in 31 µL per vial (34 µg per mL)
Amount per Vial	0.7 to 1.5 µg	1.0 µg
Functional Activity by PCR Amplification 16S ribosomal RNA gene	~ 1500 base pair amplicon	~ 1500 base pair amplicon
OD₂₆₀/OD₂₈₀ Ratio	1.7 to 2.1	1.9
Bacterial Inactivation 10% of total yield plated on agar for 14 days ³	No viable bacteria detected	No viable bacteria detected

¹Also consistent with other *Staphylococcus* species

²Multiplex PCR restriction fragment length polymorphism (RFLP) is performed to identify vancomycin genes. For more information, please see Patel, R., et al. "Multiplex PCR Detection of *vanA*, *vanB*, *vanC-1*, and *vanC-2/3* Genes in Enterococci." *J. Clin. Microbiol.* 35 (1997): 703-707. PubMed: 9041416.

³An extraction procedure was used that has been shown to consistently inactivate 100% of Gram-negative and Gram-positive bacteria.

Figure 1: Agarose Gel Electrophoresis



Lane 1: Invitrogen™ TrackIt™ 1 Kb Plus DNA Ladder
 Lane 2: ~ 200 ng of NR-51364

/Heather Couch/
 Heather Couch

26 APR 2022

Program Manager or designee, ATCC Federal Solutions

ATCC®, on behalf of BEI Resources, hereby represents and warrants that the material provided under this certificate has been subjected to the tests and procedures specified and that the results described, along with any other data provided in this certificate, are true and accurate to the best of ATCC®'s knowledge.

ATCC® is a trademark of the American Type Culture Collection.
 You are authorized to use this product for research use only. It is not intended for human use.

