

***Acinetobacter baumannii*, Strain 5-143 (OIFC143)**

Catalog No. NR-17781

This reagent is the tangible property of the U.S. Government.

Product Description:

Acinetobacter baumannii (*A. baumannii*), strain 5-143 (OIFC143) is a human isolate collected in July 2003 from the thigh wound of a patient. NR-17781 lot 70048830 was produced by inoculation of BEI Resources seed lot 62711019 into Tryptic Soy broth and grown for 1 day at 37°C in an aerobic atmosphere. Broth inoculum was added to Tryptic Soy agar kolles, which were grown for 1 day at 37°C in an aerobic atmosphere. Quality control testing was completed under propagation conditions unless otherwise noted.

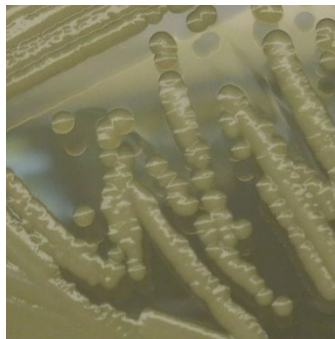
Lot: 70048830

Manufacturing Date: 01DEC2021

TEST	SPECIFICATIONS	RESULTS
Phenotypic Analysis Cellular morphology Colony morphology Growth at 44°C ± 2°C ¹ 1 day in an aerobic atmosphere on Tryptic Soy agar Motility BBL™ Motility Test Medium w/TTC Indicator for 1 day at 37°C in an aerobic atmosphere Biochemical characterization Catalase Oxidase VITEK® MS (MALDI-TOF)	Gram-negative rods Report results Growth Report results Positive Negative <i>A. baumannii</i>	Gram-negative rods Circular, convex, entire, smooth, mucoid and cream (Figure 1) Growth Non-motile Positive Negative <i>A. baumannii</i> (99.9%)
Genotypic Analysis Sequencing of 16S ribosomal RNA gene (~ 1480 base pairs)	≥ 99% sequence identity to <i>A. baumannii</i> , strain OIFC143 (GenBank: AFDL01000002.1)	100% sequence identity to <i>A. baumannii</i> , strain OIFC143 (GenBank: AFDL01000002.1)
Purity (post-freeze) 7 days at 37°C in an aerobic atmosphere with or without 5% CO ₂ on Tryptic Soy agar	Growth consistent with expected colony morphology	Growth consistent with expected colony morphology
Viability (post-freeze)	Growth	Growth

¹Growth at 44°C differentiates *A. baumannii* from *A. calcoaceticus* and *A. pittii*, which do not grow at 44°C.

Figure 1: Colony Morphology



/Heather Couch/

Heather Couch

19 MAY 2022

Program Manager or designee, ATCC Federal Solutions

ATCC®, on behalf of BEI Resources, hereby represents and warrants that the material provided under this certificate has been subjected by ATCC® to the tests and procedures specified and that the results described, along with any other data provided in this certificate, are true and accurate to the best of ATCC®'s knowledge.

ATCC® is a trademark of the American Type Culture Collection.

You are authorized to use this product for research use only. It is not intended for human use.

