

Genomic DNA from *Balamuthia mandrillaris*, Strain CDC:V188

Catalog No. NR-50145

This reagent is the tangible property of the U.S. Government.

Product Description:

Genomic DNA was extracted from *Balamuthia mandrillaris* (*B. mandrillaris*), strain CDC:V188. *B. mandrillaris*, strain CDC:V188 was isolated in 1996 from the brain of a 59-year-old male in Georgia following a traumatic leg amputation and skin abscess and was originally identified as a leptomyxid amoeba. NR-50145 was extracted from a culture of BEI Resources NR-46452 lot 62630797 using proprietary technology. NR-50145 lot 70001267 is provided in 10 mM Tris HCl, 1 mM EDTA, pH 7.5.

Lot: 70001267

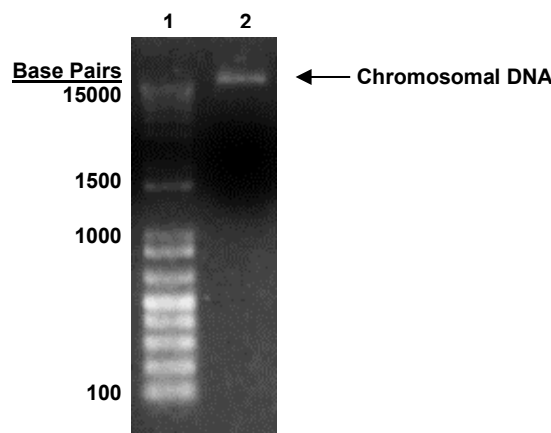
Manufacturing Date: 03FEB2016

TEST	SPECIFICATIONS	RESULTS
Agarose Gel Electrophoresis	High molecular weight chromosomal DNA	High molecular weight chromosomal DNA (Figure 1)
Content by PicoGreen® Measurement	0.2 to 3.5 µg in 20 to 200 µL per vial	2.2 µg in 131 µL per vial (17 µg per mL)
Amount per Vial	0.2 to 3.5 µg	2.2 µg
Genotypic Analysis Sequencing of 18S ribosomal RNA (rRNA) gene (~ 520 base pairs)	Consistent with <i>B. mandrillaris</i>	Consistent with <i>B. mandrillaris</i> ¹
Functional Activity by PCR Amplification 18S rRNA gene ²	~ 2500 base pair amplicon	~ 2500 base pair amplicon
OD₂₆₀/OD₂₈₀ Ratio	1.7 to 2.1	1.9
Protozoan Inactivation 10% of total yield inoculated in Eagle's Minimum Essential medium (EMEM) supplemented with 10% heat-inactivated fetal bovine serum and incubated for 14 days at 35°C in an aerobic atmosphere with 5% CO ₂	No viable organisms detected	No viable organisms detected

¹Although the sequence analysis identified the organism as *B. mandrillaris*, the results produced a mixed template. This may have resulted from the non-monoclonal isolate (this isolate may consist of more than one genotype of *Balamuthia*) or the fact that *Balamuthia* is a diploid organism and regions of heterozygosity in the 18S rRNA gene are expected.

²Primer sequences and conditions for PCR are available upon request.

Figure 1: Agarose Gel Electrophoresis



Lane 1: Invitrogen™ TrackIt™ 1 Kb Plus DNA Ladder
Lane 2: ~ 200 ng of NR-50145

/Sonia Bjorum Brower/

Sonia Bjorum Brower

23 AUG 2022

Technical Manager or designee, ATCC Federal Solutions

ATCC®, on behalf of BEI Resources, hereby represents and warrants that the material provided under this certificate has been subjected to the tests and procedures specified and that the results described, along with any other data provided in this certificate, are true and accurate to the best of ATCC®'s knowledge.

ATCC® is a trademark of the American Type Culture Collection.

You are authorized to use this product for research use only. It is not intended for human use.

