

**Staphylococcus epidermidis, Strain VCU014**

**Catalog No. NR-46377**

**Product Description:**

*Staphylococcus epidermidis* (*S. epidermidis*), strain VCU014 is of unknown origin and was deposited to BEI Resources as part of the NARSA collection. NR-46377 lot 70054854 was produced by inoculation of BEI Resources seed lot 63652474 into Tryptic Soy broth and grown for 1 day at 37°C in an aerobic atmosphere. Broth inoculum was added to Tryptic Soy agar with 5% defibrinated sheep blood kolles, which were grown for 1 day at 37°C in an aerobic atmosphere. Quality control testing was completed under propagation conditions unless otherwise noted.

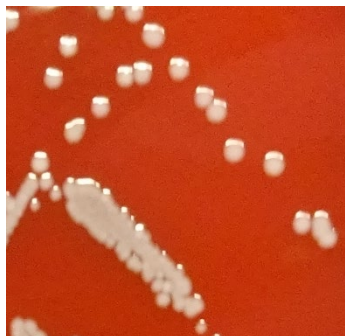
**Lot: 70054854**

**Manufacturing Date: 12AUG2022**

TEST	SPECIFICATIONS	RESULTS
<b>Phenotypic Analysis</b> Cellular morphology Colony morphology  Motility (wet mount) Hemolysis Biochemical characterization Catalase Coagulase <sup>1</sup> VITEK® 2 Compact (GP card) VITEK® MS (MALDI-TOF)	Gram-positive cocci Report results  Report results Report results  Positive Negative <i>S. epidermidis</i> (≥ 90%) <i>S. epidermidis</i> (≥ 89.9%)	Gram-positive cocci Circular, convex, entire, smooth and white (Figure 1)  Non-motile Non-hemolytic  Positive Negative <i>S. epidermidis</i> (97%) <i>S. epidermidis</i> (99.9%)
<b>Genotypic Analysis</b> Sequencing of 16S ribosomal RNA gene (1000 base pairs)	≥ 99% sequence identity to <i>S. epidermidis</i> , strain VCU014 (GenBank: JHQB01000049.1)	99.8% sequence identity to <i>S. epidermidis</i> , strain VCU014 (GenBank: JHQB01000049.1)
<b>Purity (post-freeze)</b> 7 days at 37°C in an aerobic atmosphere with or without 5% CO <sub>2</sub> on Tryptic Soy agar with 5% defibrinated sheep blood	Growth consistent with expected colony morphology	Growth consistent with expected colony morphology
<b>Viability (post-freeze)</b>	Growth	Growth

<sup>1</sup>1 day at 37°C in rabbit serum with 0.15% EDTA (Coagulase Plasma BBL™ 240827)

**Figure 1: Colony Morphology**



/Sonia Bjorum Brower/

Sonia Bjorum Brower

28 NOV 2022

Technical Manager or designee, ATCC Federal Solutions

ATCC<sup>®</sup>, on behalf of BEI Resources, hereby represents and warrants that the material provided under this certificate has been subjected by ATCC<sup>®</sup> to the tests and procedures specified and that the results described, along with any other data provided in this certificate, are true and accurate to the best of ATCC<sup>®</sup>'s knowledge.

ATCC<sup>®</sup> is a trademark of the American Type Culture Collection.

You are authorized to use this product for research use only. It is not intended for human use.

