

Monoclonal Anti-SARS-Related Coronavirus 2 Spike Glycoprotein Receptor Binding Domain (RBD), Chimeric Antibody (produced *in vitro*)

Catalog No. NR-55408

ACROBiosystems Catalog No. S1N-M130

Product Description:

Antibody Class: IgG1κ

Chimeric monoclonal antibody prepared against the severe acute respiratory syndrome-related coronavirus 2 (SARS-CoV-2) spike (S) glycoprotein receptor binding domain (RBD) was produced using recombinant antibody technology. The variable region was obtained from mice immunized with purified recombinant SARS-CoV-2 spike S1 protein, which was combined with constant domains of the human IgG1 molecule. NR-55408 lot C553P1-20CTR1-W8 was lyophilized from 70 µL bulk antibody in a 0.2 µm filtered solution of phosphate-buffered saline, pH 7.4 with 10% trehalose.

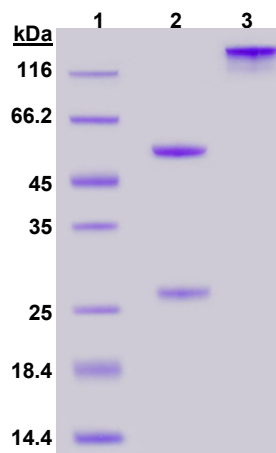
Lot: C553P1-20CTR1-W8

Receipt Date: 13MAY2021

TEST	SPECIFICATIONS	RESULTS
Appearance	White Powder	White Powder
SDS-PAGE Analysis	Protein band of interest represents > 90% of total staining intensity	Dominant bands of ~ 50 and 30 kDa under reducing conditions and ~ 116 kDa under non-reducing conditions represent > 95% of total staining intensity (Figure 1)
Final Product Amount per vial	Report results	100 µg
Functional Activity by ELISA	Reactive	Reactive ¹
Filtration	0.2 µm sterile-filtered	0.2 µm sterile-filtered
Endotoxin Content (Limulus Amebocyte Lysate Assay)	Report results	< 1.0 EU/µg

¹Using 2 µg/mL of immobilized SARS-CoV-2 S1 protein (ACROBiosystems Cat. No. S1N-C52H2) with a linear range of 0.2 to 3 ng/mL

Figure 1: SDS-PAGE Analysis



Lane 1: MW ladder
 Lane 2: NR-55408 (reducing conditions)
 Lane 3: NR-55408 (non-reducing conditions)

/Sonia Bjorum Brower/

Sonia Bjorum Brower

01 JUN 2023

Technical Manager or designee, ATCC Federal Solutions

ATCC®, on behalf of BEI Resources, hereby represents and warrants that the material provided under this certificate has been subjected to the tests and procedures specified and that the results described, along with any other data provided in this certificate, are true and accurate to the best of ATCC®'s knowledge.

ATCC® is a trademark of the American Type Culture Collection.

You are authorized to use this product for research use only. It is not intended for human use.

