

Staphylococcus hominis, Strain SK119

Catalog No. HM-119

Product Description:

Staphylococcus hominis (*S. hominis*), strain SK119 was isolated from normal skin of the left arm of a 47-year-old woman. HM-119 was produced by the inoculation of BEI Resources seed lot 59210583 into Brain Heart Infusion broth and incubated for 1 day at 37°C in an aerobic atmosphere. Broth inoculum was added to Tryptic Soy agar with 5% defibrinated sheep blood kolles, which were grown for 1 day at 37°C in an aerobic atmosphere to produce this lot. Quality control testing was completed under propagation conditions unless otherwise noted.

Note: Quality control of HMP material is only performed to demonstrate that the material distributed by BEI Resources is identical to the deposited material. It should not be considered a complete characterization of the deposited organism.

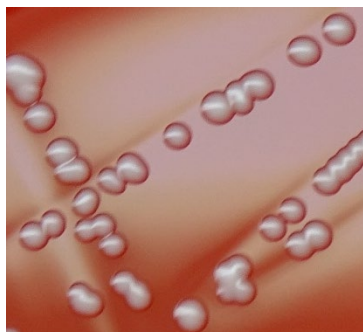
Lot: 70057815

Manufacturing Date: 06JAN2023

TEST	SPECIFICATIONS	RESULTS
Phenotypic Analysis Cellular morphology Colony morphology Motility (wet mount) VITEK® MS (MALDI-TOF)	Gram-positive cocci Report results Report results <i>S. hominis</i>	Gram-positive cocci Circular, convex, entire, smooth and white (Figure 1) Non-motile <i>S. hominis</i> (99.9%)
Genotypic Analysis Sequencing of 16S ribosomal RNA gene (~ 1250 base pairs)	≥ 99% sequence identity to <i>S. hominis</i> , Strain SK119 (GenBank: ACLP01000023.1)	99.8% sequence identity to <i>S. hominis</i> , Strain SK119 (GenBank: ACLP01000023.1) ¹
Purity (post-freeze) 7 days at 37°C in an aerobic atmosphere with and without 5% CO ₂ on Tryptic Soy agar with 5% defibrinated sheep blood	Growth consistent with expected colony morphology	Growth consistent with expected colony morphology
Viability (post-freeze)	Growth	Growth

¹ Also consistent with other *Staphylococcus* species

Figure 1: Colony Morphology



/Sonia Bjorum Brower/

Sonia Bjorum Brower

22 JUN 2023

Technical Manager or designee, ATCC Federal Solutions

ATCC®, on behalf of BEI Resources, hereby represents and warrants that the material provided under this certificate has been subjected to the tests and procedures specified and that the results described, along with any other data provided in this certificate, are true and accurate to the best of ATCC®'s knowledge.

ATCC® is a trademark of the American Type Culture Collection.

You are authorized to use this product for research use only. It is not intended for human use.

