

**Genomic DNA from *Cryptococcus gattii*, Strain AIR265a**

**Catalog No. NR-50382**

**Product Description:**

Genomic DNA was extracted from a preparation of *Cryptococcus gattii* (*C. gattii*), strain AIR265a, which is the progeny of a genotypic cross between *C. gattii* strains R265 and Alg166. NR-50382 lot 70004167 was extracted from a preparation of BEI Resources NR-43200 lot 61631753 using proprietary technology and vialled in 10 mM Tris-HCl, 1 mM EDTA, pH 8.

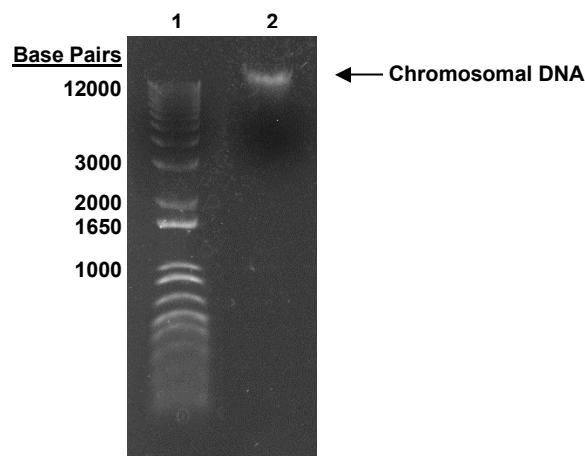
**Lot: 70004167**

**Manufacturing Date: 17MAY2021**

TEST	SPECIFICATIONS	RESULTS
<b>Agarose Gel Electrophoresis</b>	High molecular weight chromosomal DNA	High molecular weight chromosomal DNA (Figure 1)
<b>Concentration by PicoGreen® Measurement</b>	Report results	0.9 µg in 57 µL per vial (15 µg per mL)
<b>Amount per Vial</b>	0.2 to 3.5 µg	0.9 µg
<b>Genotypic Analysis</b> Sequencing of partial 18S ribosomal RNA (rRNA) gene, internal transcribed spacer (ITS) 1, 5.8S rRNA gene, ITS 2, partial 28S rRNA (~ 520 base pairs) Sequencing of 26S rRNA gene (620 base pairs)	≥ 99% sequence identity to <i>C. gattii</i> (GenBank: FJ914888.1) ≥ 99% sequence identity to <i>C. gattii</i> (GenBank: KC171326.1)	100% sequence identity to <i>C. gattii</i> (GenBank: FJ914888.1) 100% sequence identity to <i>C. gattii</i> (GenBank: KC171326.1)
<b>Functional Activity by PCR Amplification<sup>1</sup></b> 18S rRNA gene	~ 1300 base pair amplicon	~ 1300 base pair amplicon
<b>OD<sub>260</sub>/OD<sub>280</sub> Ratio</b>	1.6 to 2.1	1.8
<b>Fungal Inactivation</b> 10% of total yield inoculated on Yeast Mold agar and incubated for 14 days at 25°C in an aerobic atmosphere	No viable organisms detected	No viable organisms detected

<sup>1</sup>Primer sequences and conditions for PCR are available upon request.

**Figure 1: Agarose Gel Electrophoresis**



Lane 1: Invitrogen™ TrackIt™ 1 Kb Plus DNA Ladder  
Lane 2: ~ 200 ng of NR-50382

/Heather Couch/

Heather Couch

01 JUN 2022

Program Manager or designee, ATCC Federal Solutions

ATCC®, on behalf of BEI Resources, hereby represents and warrants that the material provided under this certificate has been subjected to the tests and procedures specified and that the results described, along with any other data provided in this certificate, are true and accurate to the best of ATCC®'s knowledge.

ATCC® is a trademark of the American Type Culture Collection.

You are authorized to use this product for research use only. It is not intended for human use.

