

***Bifidobacterium longum* subsp. *longum*, Strain 1-6B**

Catalog No. HM-846

Product Description:

Bifidobacterium longum (*B. longum*) subsp. *longum*, strain 1-6B was isolated in 2006 from feces of a six-year-old healthy human child in Russia. HM-846 was produced by the inoculation of BEI Resources seed lot 61773985 into Modified Reinforced Clostridial broth and incubated for 2 days at 37°C in an anaerobic atmosphere (< 5% O₂; Remel™ Pack-Anaero™). The material from the initial growth was passaged once in Modified Reinforced Clostridial broth for 2 days at 37°C in an anaerobic atmosphere to produce this lot. Quality control testing was completed on Tryptic Soy agar with 5% defibrinated sheep blood under propagation conditions unless otherwise noted.

Note: Quality control of HMP material is only performed to demonstrate that the material distributed by BEI Resources is identical to the deposited material. It should not be considered a complete characterization of the deposited organism.

Lot: 70060463

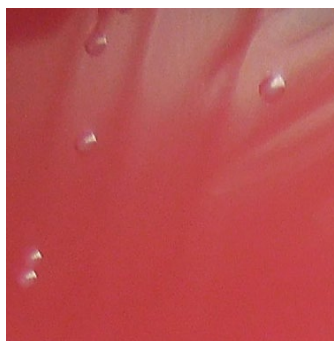
Manufacturing Date: 05MAY2023

TEST	SPECIFICATIONS	RESULTS
Phenotypic Analysis Cellular morphology Colony morphology Motility (wet mount)	Gram-positive rods Report results Report results	Gram-positive rods Circular, low convex, entire, translucent and smooth (Figure 1) Non-motile
Genotypic Analysis Sequencing of 16S ribosomal RNA gene (~ 1350 base pairs)	≥ 99% sequence identity to <i>B. longum</i> subsp. <i>longum</i> , strain 1-6B (GenBank: AJTF01000016)	100% sequence identity to <i>B. longum</i> subsp. <i>longum</i> , strain 1-6B (GenBank: AJTF01000016) ¹
Purity (post-freeze) Anaerobic 7 days at 37°C on Tryptic Soy agar with 5% defibrinated sheep blood Aerobic with 5% CO ₂ 7 days at 37°C on Tryptic Soy agar with 5% defibrinated sheep blood	Growth consistent with expected colony morphology Growth	Growth consistent with expected colony morphology Growth ²
Viability (post-freeze)	Growth	Growth

¹Also consistent with other *Bifidobacterium* species

²*B. longum* subsp. *longum* is an aerotolerant anaerobe and the growth in an aerobic atmosphere with 5% CO₂ is not unexpected. VITEK® MS (MALDI-TOF) analysis identified this growth as *Bifidobacterium* spp.

Figure 1: Colony Morphology



/Sonia Bjorum Brower/

Sonia Bjorum Brower

16 JUL 2023

Technical Manager or designee, ATCC Federal Solutions

ATCC®, on behalf of BEI Resources, hereby represents and warrants that the material provided under this certificate has been subjected to the tests and procedures specified and that the results described, along with any other data provided in this certificate, are true and accurate to the best of ATCC®'s knowledge.

ATCC® is a trademark of the American Type Culture Collection.

You are authorized to use this product for research use only. It is not intended for human use.

