

H1 Hemagglutinin (HA) Protein from Influenza A Virus, A/New York/18/2009 (H1N1), Recombinant from Baculovirus

Catalog No. NR-51159

This reagent is the tangible property of the U.S. Government.

Product Description:

A recombinant form of the H1 hemagglutinin (HA) protein from influenza A virus, A/New York/18/2009 (H1N1) was produced in Sf9 insect cells using a baculovirus expression vector system. The recombinant HA protein containing the H1 ectodomain was purified by nickel affinity chromatography. The recombinant HA protein lacks the transmembrane domain and signal sequence, and includes a C terminal octa-histidine tag.

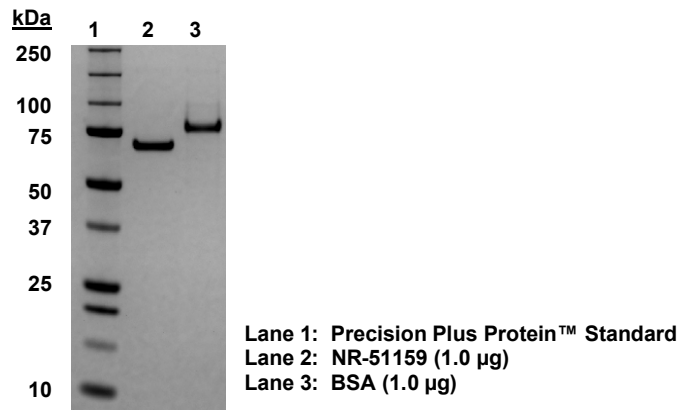
Lot: 70061246

Manufacturing Date: 21AUG2023

TEST	SPECIFICATIONS	RESULTS
Appearance	Clear and colorless	Clear and colorless
SDS-PAGE Analysis	Protein band of interest represents > 90% of total staining intensity	Dominant band of 75 kDa represents ~ 92% of total staining intensity (Figure 1)
Concentration by Bradford Assay Bovine Serum Albumin (BSA; standard)	Report results	0.11 mg/mL
Vial Content Amount per vial Volume per vial	Report results Report results	93.8 µg 830 µL
Functional Activity Hemagglutination activity 0.5% chicken red blood cells 0.5% turkey red blood cells	Report results Report results	Negative Positive (1:80)
Identification by Western Blot Analysis Polyclonal anti-HA ¹	Reactive	Reactive
Endotoxin Content (Limulus Amebocyte Lysate Assay)	Report results	< 44.2 EU/mg
Filtration	0.2 µm sterile-filtered	0.2 µm sterile-filtered

¹Using a 1:4000 dilution of polyclonal Anti-Influenza Virus H1 (H0) Hemagglutinin (HA), A/Puerto Rico/8/34 (H1N1), (BEI Resources NR-3148) as primary antibody and a 1:4000 dilution of HRP-conjugated anti-goat IgG (R&D Systems HAF109) as secondary antibody.

Figure 1: SDS-PAGE Analysis



/Sonia Bjorum Brower/

Sonia Bjorum Brower

12 OCT 2023

Technical Manager or designee, ATCC Federal Solutions

ATCC®, on behalf of BEI Resources, hereby represents and warrants that the material provided under this certificate has been subjected to the tests and procedures specified and that the results described, along with any other data provided in this certificate, are true and accurate to the best of ATCC®'s knowledge.

ATCC® is a trademark of the American Type Culture Collection.

You are authorized to use this product for research use only. It is not intended for human use.

