

***Mycobacterium tuberculosis*, Strain HN878, Cell Wall Fraction****Catalog No. NR-14830**

This reagent is the tangible property of the U.S. Government.

**Product Description:**

NR-14830 is a preparation of the cell wall fraction of *Mycobacterium tuberculosis* (*M. tuberculosis*), strain HN878, and contains proteins and non-protein compounds such as mAGP.

**Lot: 70057179****Manufacturing Date: 11MAR2023**

Production and QC testing were performed by Colorado State University (CSU). The CSU documentation for lot 14.HN878.11.11.11.CW is attached.

ATCC®, on behalf of BEI Resources, hereby represents and warrants that the material provided under this certificate has been subjected by the contractor to the tests and procedures specified and that the results described, along with any other data provided in this certificate, are true and accurate to the best of ATCC®'s knowledge.

ATCC® is a trademark of the American Type Culture Collection.

You are authorized to use this product for research use only. It is not intended for human use.



## WORK SHEET FOR CELL WALL

### General Information

BEI Catalog Number: NR-14830  
CSU Lot Number: 14.HN878.11.11.11.CW  
Species: *Mycobacterium tuberculosis*  
Strain: HN878

### Sonication and Fractionation Information

Starting Material (lot#): 14.HN878.11.11.11.Wcg.b Cells Irradiated: Yes  
Viability Test Performed: No Viable Organism Detected Cell Amount (wet weight): 70.4 g  
SOP#: PP008.4  
Notebook; Page(s): Rebecca Staudenmaier Notebook #2 Page 18

Date of French Press Sonication: 2/7/2023 Buffer Used: PBS-EDTA with protease inhibitor  
Centrifugation Notes: 27,000 x g for 1 hour at 4°C x 2  
10mM ammonium bicarbonate dialysis Date started: 3/10/2023 Date Completed: 3/11/2023

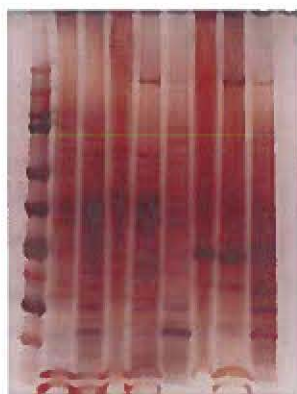
Notebook Pages: Rebecca Staudenmaier NB #2 pgs. 12; Megan Stookey NB #2 pgs. 58-59 (French Press)  
Notes: The original cell pellet was lysed. ¼ of lysate was used for cell wall product. The remainder was used for whole cell lysate product.

### Quality Control Information

BCA: 5.882 µg/µl Notebook and page(s): RS Notebook #2 Pages 19-22  
Total Protein: 190 mg  
Silver Stain Date: 3/16/2023 Notebook and page(s): RS Notebook #2 Page 25

### QC Gel: 5 µg

1 2 3 4 5 6 7 8 9



Lane 1 = Ladder  
Lane 2 = CW

### Aliquot Information:

\*Aliquot information reflects aliquots made at the time of QC. Bulk aliquots will be broken down as needed.

35 vials x 1 mg to BEI  
31 vials x 5 mg in bulk

RA Staudenmaier 4/14/23  
(Research Associate) (date)

[Signature] 4/14/2023  
(Laboratory Supervisor) (date)