

Genomic DNA from *Escherichia coli*, Strain HS
Catalog No. NR-9281

Product Description: Genomic DNA was isolated from a preparation of *Escherichia coli* (*E. coli*), strain HS, serotype O9. *E. coli*, strain HS was isolated from a laboratory scientist at Walter Reed Army Institute of Research, 1978.

Lot¹: 58607113
Manufacturing Date: 18MAY2009

TEST	SPECIFICATIONS	RESULTS
Sequencing of 16S Ribosomal RNA Gene (~ 1360 bp)	Consistent with <i>E. coli</i>	Consistent with <i>E. coli</i> ²
Agarose Gel Electrophoresis	High molecular weight chromosomal DNA	High molecular weight chromosomal DNA (Figure 1)
Concentration by PicoGreen[®] Measurement	4 to 6 µg in 25 to 100 µL per vial	5.9 µg in 26 µL per vial (227 µg/mL)
Functional Activity by PCR Amplification 16S ribosomal RNA gene	~ 1500 bp amplicon	~ 1500 bp amplicon
OD₂₆₀/OD₂₈₀ Ratio	1.7 to 1.9	1.8
Bacterial Inactivation 10% of total yield plated on Tryptic Soy Agar ^{3,4}	No viable bacteria detected	No viable bacteria detected

¹The bacterial preparation used for extraction of genomic DNA was produced by inoculation of the deposited material into Tryptic Soy Broth. After incubation for 24 hours at 37°C, genomic DNA was extracted using proprietary technology.

²Also consistent with *Shigella* species

³7 days at 37°C in an aerobic atmosphere

⁴An extraction procedure was used that has been shown to consistently inactivate 100% of Gram-negative bacteria.

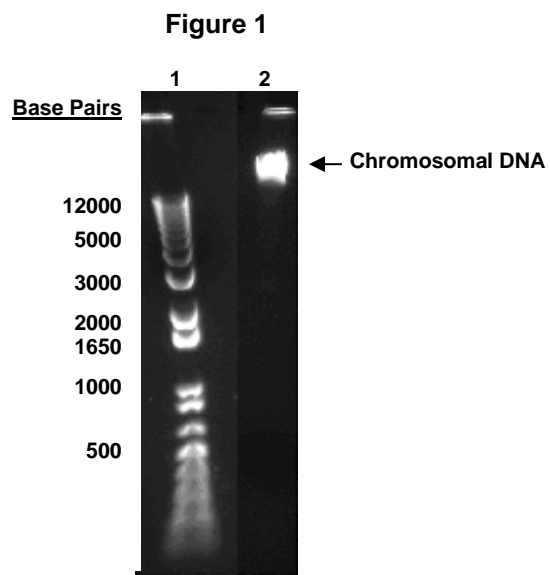
Date: 01 OCT 2009
Signature: Signature on File
Title: Technical Manager, BEI Authentication or designee

ATCC[®], on behalf of BEI Resources, hereby represents and warrants that the material provided under this certificate has been subjected to the tests and procedures specified and that the results described, along with any other data provided in this certificate, are true and accurate to the best of ATCC[®]'s knowledge.

ATCC[®] is a trademark of the American Type Culture Collection.

You are authorized to use this product for research use only. It is not intended for human use.





Lane 1: Invitrogen™ TrackIt™ 1 Kb Plus DNA Ladder
Lane 2: 200 ng of NR-9281