

Burkholderia thailandensis*, Strain E426*Catalog No. NR-9908**

Product Description: *Burkholderia thailandensis* (*B. thailandensis*) are saprophytic, motile, aerobic, Gram-negative coccobacilli. Strain E426 is an environmental isolate obtained from a rice field soil sample in northeast Thailand.

Lot¹: 58243198**Manufacturing Date: 24OCT2008**

TEST	SPECIFICATIONS	RESULTS
Phenotypic Analysis Cellular morphology Colony color and morphology on Nutrient Agar ² Growth on Ashdown's Selective Agar (ASA) ^{2,3} Growth on <i>B. pseudomallei</i> Selective Agar (BPSA) ^{2,4} Motility Analytical profile index (API 20 NE) ⁵ L-arabinose ⁶ Oxidase	Gram-negative rod Report results Positive Positive Motile Report results Positive Report results	Gram-negative rod Circular, convex, entire, opaque and cream (Figure 1) Positive: Circular, convex, entire, opaque and dark purple (Figure 2) Positive: Circular, convex, entire, opaque and light pink or circular, convex, entire, opaque and dark pink (Figure 3) Motile Consistent with <i>Burkholderia</i> Positive Negative
Genotypic Analysis Sequencing of 16S ribosomal RNA gene (~ 1380 bp)	Consistent with <i>B. thailandensis</i>	Consistent with <i>B. thailandensis</i>
PCR Assay of Extracted DNA 16S ribosomal RNA gene	~ 1500 bp amplicon	~ 1500 bp amplicon
Viability (post-freeze)⁷	Growth	Growth

¹NR-9908 was produced by inoculation of the deposited material into Nutrient Broth (BD 234000) and grown 48 hours at 30°C and aerobic atmosphere. Broth inoculum was added to Kolles and incubated for 48 hours at 30°C and aerobic atmosphere to produce this lot.

²48 hours at 30°C and aerobic atmosphere

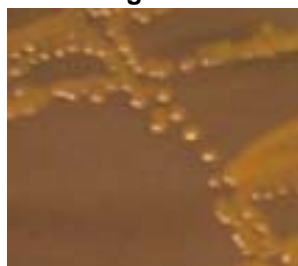
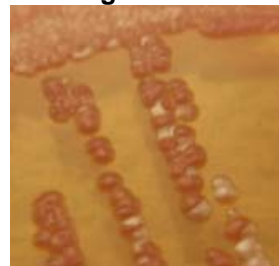
³ASA is a gentamicin-containing media that results in selective growth of *B. pseudomallei* (Ashdown, L. R. "An Improved Screening Technique for Isolation of *Pseudomonas pseudomallei* from Clinical Specimens." *Pathology* 11 (1979): 293-297. PubMed: 460953).

⁴BPSA is a gentamicin-containing media that results in selective growth of *B. pseudomallei* and has improved recovery of more easily inhibited strains of *B. pseudomallei* (Howard, K. and T. J. Inglis. "Novel Selective Medium for Isolation of *Burkholderia pseudomallei*." *J. Clin. Microbiol.* 41 (2003): 3312-3316. PubMed: 12843080).

⁵*B. thailandensis* is not in the API database.

⁶*B. thailandensis* utilizes L-arabinose as a carbon source. This distinguishes it from *B. pseudomallei*, which does not utilize L-arabinose as a carbon source.

⁷48 hours at 30°C in Nutrient Broth

Figure 1**Figure 2****Figure 3**

Date: 26 OCT 2009**Signature:** Signature on File**Title:** Technical Manager, BEI Authentication or designee

ATCC[®], on behalf of BEI Resources, hereby represents and warrants that the material provided under this certificate has been subjected to the tests and procedures specified and that the results described, along with any other data provided in this certificate, are true and accurate to the best of ATCC[®]'s knowledge.

ATCC[®] is a trademark of the American Type Culture Collection.

You are authorized to use this product for research use only. It is not intended for human use.

