

Plasmid pMRLB.13 Containing Gene Rv0652 (Protein Rp1L) from *Mycobacterium tuberculosis***Catalog No. NR-13285**

This reagent is the tangible property of the U.S. Government.

Product Description: NR-13285 is a recombinant expression vector containing *Mycobacterium tuberculosis* gene Rv0652, which encodes a probable 50S ribosomal protein, Rp1L. Gene Rv0652 was amplified by PCR and cloned into pET23b for expression in *Escherichia coli*.

Lot: 03.EC.10.14**Manufacturing Date: 14OCT2003**

TEST	SPECIFICATIONS	RESULTS
Agarose Gel Electrophoresis (see attached QC Gel)¹ Linearization with <i>Sa</i> I Linearization with <i>Nde</i> I Linearization with <i>Xho</i> I Digestion with <i>Nde</i> I and <i>Xho</i> I	~ 4.0 kb ~ 4.0 kb ~ 4.0 kb ~ 0.39 kb (insert); ~ 3.6 kb (vector)	~ 4.0 kb ~ 4.0 kb ~ 4.0 kb Pending ; ~ 3.6 kb
Concentration by OD₂₆₀	Report results	0.09 µg/µL
Absorbance Ratio (OD₂₆₀/OD₂₈₀)	Report results	1.8

¹Performed by Colorado State University under the TB Vaccine Testing and Research Materials Contract (NIH)

Date: 29 OCT 2009**Signature:** Signature on File**Title:** Technical Manager, BEI Authentication or designee

ATCC®, on behalf of BEI Resources, hereby represents and warrants that the material provided under this certificate has been subjected by the contractor to the tests and procedures specified and that the results described, along with any other data provided in this certificate, are true and accurate to the best of ATCC®'s knowledge.

ATCC® is a trademark of the American Type Culture Collection.

You are authorized to use this product for research use only. It is not intended for human use.



QC gel

Restriction enzymes used in QC analysis:

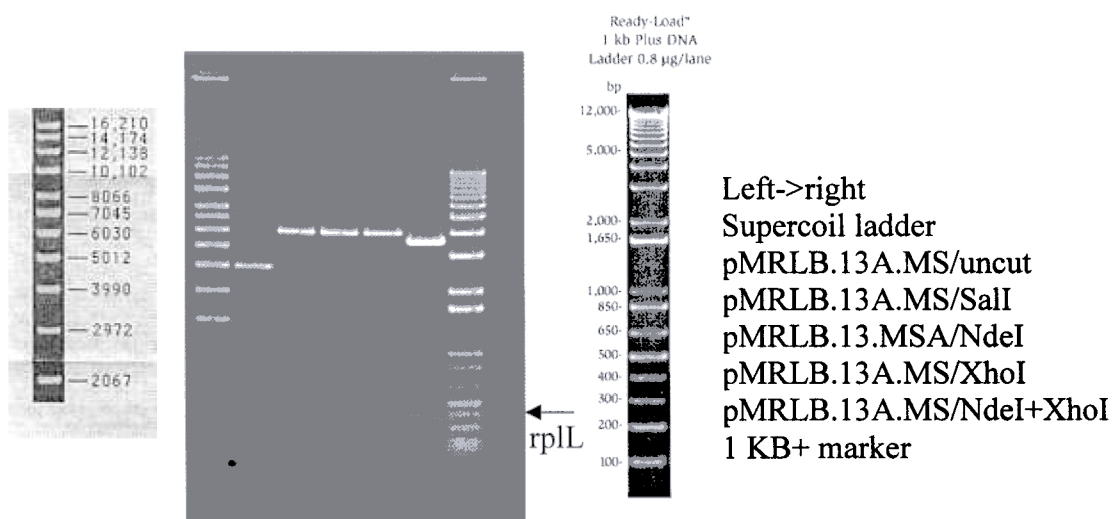
NdeI & XhoI (cloning), SalI (insert diagnostic – 1 site in rplL)

Expected size of restriction fragments

Vector	<u>3.6 kb pET23b – NdeI +XhoI</u>
Insert	<u>0.39 kb rplL – NdeI +XhoI</u>
Other	<u>4.0 kb linearized plasmid – NdeI, XhoI,SalI single digests</u>

Gel description (file number, % agarose, buffer) kb1 notebook3/1.0 % agarose/1XTAE

Molecular weight markers Invitrogen 1KB Plus, Invitrogen Supercoiled DNA Ladder



NOTE: Cloned DNA has two ATGs at translation start – predict two Mets at protein n-terminus

Generated by Kerry Brothman Date 10-30-03
Supervisor Mike T. Bell Date 11-4-03

Form 4.2.03.JB