

Genomic DNA from *Staphylococcus hominis*, Strain SK119
Catalog No. HM-119D
Product Description: Genomic DNA was obtained from a preparation of *Staphylococcus hominis* (*S. hominis*), strain SK119.

Lot¹: 59376712
Manufacturing Date: 10JUN2010

TEST	SPECIFICATIONS	RESULTS
Sequencing of 16S ribosomal RNA gene (~ 1300 base pairs) Sequencing of 16S Ribosomal RNA Gene (~ 1410 base pairs)	Consistent with GenBank: ACLP00000000 Consistent with <i>S. hominis</i>	Consistent with GenBank: ACLP00000000 Consistent with <i>S. hominis</i>
Agarose Gel Electrophoresis	High molecular weight chromosomal DNA	High molecular weight chromosomal DNA (Figure 1)
Concentration by PicoGreen [®] Measurement	0.7 to 1.5 µg in 25 to 100 µL per vial	1.0 µg in 42 µL per vial (25 µg/mL)
Functional Activity by PCR Amplification 16S ribosomal RNA gene	~ 1500 bp amplicon	~ 1500 bp amplicon
OD ₂₆₀ /OD ₂₈₀ Ratio	1.7 to 1.9	1.7
Bacterial Inactivation 10% of total yield plated on BHI Agar ^{2,3}	No viable bacteria detected	No viable bacteria detected

¹The bacterial preparation used for extraction of genomic DNA was produced by Brain Heart Infusion (BHI) Broth culture of the deposited material. After incubation for 24 hours at 37°C and aerobic atmosphere, genomic DNA was extracted using proprietary technology.

²7 days at 37°C in an aerobic atmosphere

³An extraction procedure was used that has been shown to consistently inactivate 100% of Gram-positive and Gram-negative bacteria.

Date: 04 AUG 2010

Signature:

Title:

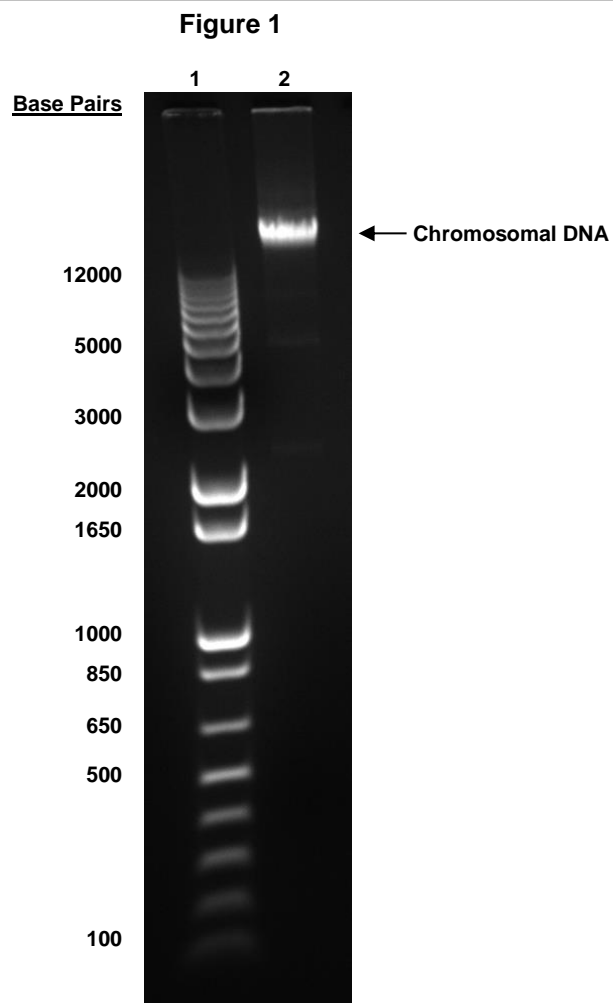
Technical Manager, BEI Authentication or designee

ATCC[®], on behalf of BEI Resources, hereby represents and warrants that the material provided under this certificate has been subjected by ATCC[®] to the tests and procedures specified and that the results described, along with any other data provided in this certificate, are true and accurate to the best of ATCC[®]'s knowledge.

ATCC[®] is a trademark of the American Type Culture Collection.

You are authorized to use this product for research use only. It is not intended for human use.





Lane 1: Invitrogen™ TrackIt 1 Kb Plus DNA Ladder™
Lane 2: 200 ng of HM-119D