

Certificate of Analysis for NR-4751

Monoclonal Anti-Dengue Virus Type 1 Envelope Protein, Clone E29 (produced *in vitro*)

Catalog No. NR-4751

Product Description: Antibody Class: IgG1 κ

Mouse monoclonal antibody prepared against the envelope glycoprotein of dengue virus type 1 (DEN-1) was purified from clone E29 hybridoma supernatant by protein G affinity chromatography. The clone E29 antibody is reported to bind to domain III in the envelope glycoprotein.

Lot: 58007021

Manufacturing Date: 11JAN2008

| TEST | SPECIFICATIONS | RESULTS |
|-----------------------------------------------------------------------------------------------|----------------------------------------------------------|--------------------------------------------------|
| Antibody Class Determination | Report results | IgG1 κ |
| Identity by SDS-PAGE (Coomassie Blue) | Correct molecular weight (MW) for heavy and light chains | Correct MW for heavy and light chains (Figure 1) |
| Concentration by Modified Lowry Assay ¹ | Report results | 0.89 mg/mL |
| Functional Activity Indirect fluorescent antibody assay ² ELISA ³ | Report results Report results | Fluorescence observed Reactive |
| Sterility | 0.22 μ m filter-sterilized | 0.22 μ m filter-sterilized |

¹BioRad DC Protein Assay (500-0116)

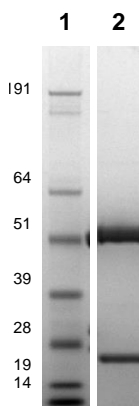
²Using BEI Resources NR-82 (DEN-1, Hawaii)-infected Vero cells (ATCC[®] CCL-81[™]) and a 1:100 dilution of NR-4751

³Using a 1:50 dilution of cell lysate from BEI Resources NR-82 (DEN-1, Hawaii)-infected Vero cells (ATCC[®] CCL-81[™]) and a 1:60 dilution of NR-4751

Figure 1: SDS-PAGE of NR-4751.

Lane 1: SeeBlue[®] Pre-stained Standard (Invitrogen)

Lane 2: 6.5 μ g of NR-4751



Date: 04 NOV 2010

Signature:

Dorothy C. Young

Title:

Technical Manager, BEI Authentication or designee

ATCC[®], on behalf of BEI Resources, hereby represents and warrants that the material provided under this certificate has been subjected to the tests and procedures specified and that the results described, along with any other data provided in this certificate, are true and accurate to the best of ATCC[®]'s knowledge.

ATCC[®] is a trademark of the American Type Culture Collection.

You are authorized to use this product for research use only. It is not intended for human use.

