

Certificate of Analysis for NR-13451

Monoclonal Anti-Influenza Virus H1 Hemagglutinin (HA), A/South Carolina/1/1918 (H1N1), Clone 5D3 (produced *in vitro*)

Catalog No. NR-13451

Product Description: Antibody Class: IgG2ak

Mouse monoclonal antibody prepared against the H1 hemagglutinin (HA) of influenza virus, A/South Carolina/1/1918 (H1N1) was purified from clone 5D3 hybridoma supernatant by protein G affinity chromatography.

Lot: 59046786

Manufacturing Date: 29MAR2010

TEST	SPECIFICATIONS	RESULTS
Antibody Class Determination	Report results	IgG2ak
Experion Pro260 Analysis	Correct molecular weight (MW) for heavy and light chains Report results	Correct MW for heavy and light chains (Figure 1) 99.9% pure
Concentration by Spectrophotometer at OD ₂₈₀	Report results	1.1 mg/mL
Functional Activity Hemagglutination inhibition assay ¹ Indirect immunofluorescence assay ² Western blot assay ³	Report results Report results Report results	Reactive Fluorescence observed Strongly reactive with HA0 (Figure 2)
Sterility	0.22 µm filter-sterilized	0.22 µm filter-sterilized

¹Using 0.5 mg/mL of NR-13451 and 1918 HA(SC)/NA virus-like particles, which are described in Yu, X., et al., "Neutralizing Antibodies Derived from the B cells of 1918 Influenza Pandemic Survivors." *Nature* 455 (2008): 532-536. PubMed: 18716625.

²Using 10 µg/mL of NR-13451 and MDCK cells expressing HA from influenza virus, A/South Carolina/1/1918 (H1N1)

³Using 1 µg/mL of NR-13451 and a lysate of 293T cells expressing HA from influenza virus, A/South Carolina/1/1918 (H1N1)

Figure 1 – Experion Pro260 Analysis

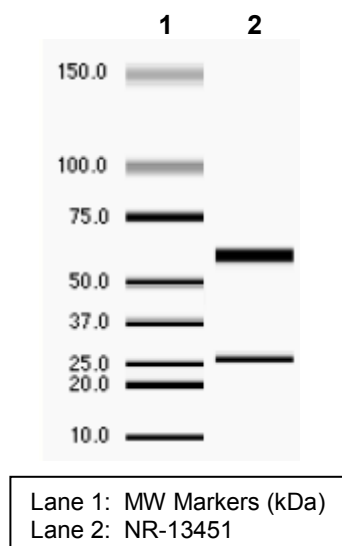
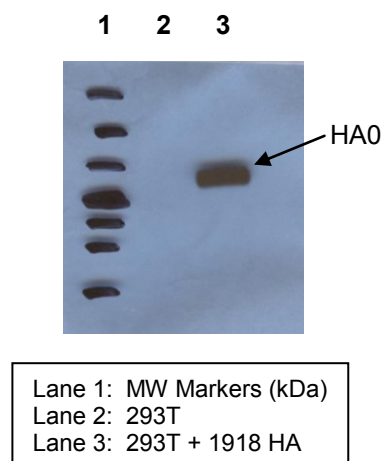


Figure 2 – Western Blot with NR-13451



Certificate of Analysis for NR-13451**Date:** 19 NOV 2010**Signature:** *Dorothy C. Young***Title:** Technical Manager, BEI Authentication or designee

ATCC[®], on behalf of BEI Resources, hereby represents and warrants that the material provided under this certificate has been subjected to the tests and procedures specified and that the results described, along with any other data provided in this certificate, are true and accurate to the best of ATCC[®]'s knowledge.

ATCC[®] is a trademark of the American Type Culture Collection.

You are authorized to use this product for research use only. It is not intended for human use.

