

Genomic RNA from Kilbourne F38: A/Korea/426/68 (HA, NA) x A/Puerto Rico/8/34 (H2N2)

Catalog No. NR-9679

Product Description: Genomic RNA was isolated from a preparation of pooled allantoic fluid from specific-pathogen free (SPF) embryonated chicken eggs¹ infected with reassortant influenza A virus, A/Korea/426/68 (HA, NA) x A/Puerto Rico/8/34 (H2N2) (Kilbourne F38).

Lot²: 58214984

Manufacturing Date: 16JUL2008

TEST	SPECIFICATIONS	RESULTS
Sequencing of Influenza A Specific Region Matrix gene (~ 890 nucleotides)	Influenza A virus	Influenza A virus
Functional Activity by RT-PCR Amplification^{3,4}	~ 1030 bp amplicon	~ 1030 bp amplicon (Figure 1)
Total RNA Content by RiboGreen[®] Measurement (Viral, Cellular and Carrier)	Report results	62.5 ng per 100 µL
Total DNA Content by PicoGreen[®] Measurement (Viral and Cellular)	Report results	24 ng per 100 µL
Virus Inactivation 10% of total yield incubated in SPF embryonated chicken eggs ¹ and evaluated by hemagglutination assay ⁵	No virus detected	No virus detected
Sodium Azide Content	Report results	0.0004%

¹10 to 11-day-old SPF Fertile Chicken Eggs acquired from B&E Eggs, York Springs, Pennsylvania

²Nucleic acid was extracted from a preparation of reassortant influenza A virus, A/Korea/426/68 (HA, NA) x A/Puerto Rico/8/34 (H2N2) (BEI Resources NR-3527; Lot: 58152431) using a QIAamp[®] Viral RNA Mini kit (Qiagen 52906).

³Amplified using 1:25 dilution of NR-9679 and One-Step RT-PCR Kit (Qiagen 210212)

⁴The primers are described in Hoffmann, E., et al. "Universal Primer Set for the Full-Length Amplification of All Influenza A Viruses." *Arch. Virol.* 146 (2001): 2275-2289. PubMed: 11811679.

⁵This extraction procedure has been shown to consistently inactivate 100% of influenza viruses.

Date: 20 JAN 2011

Signature: 

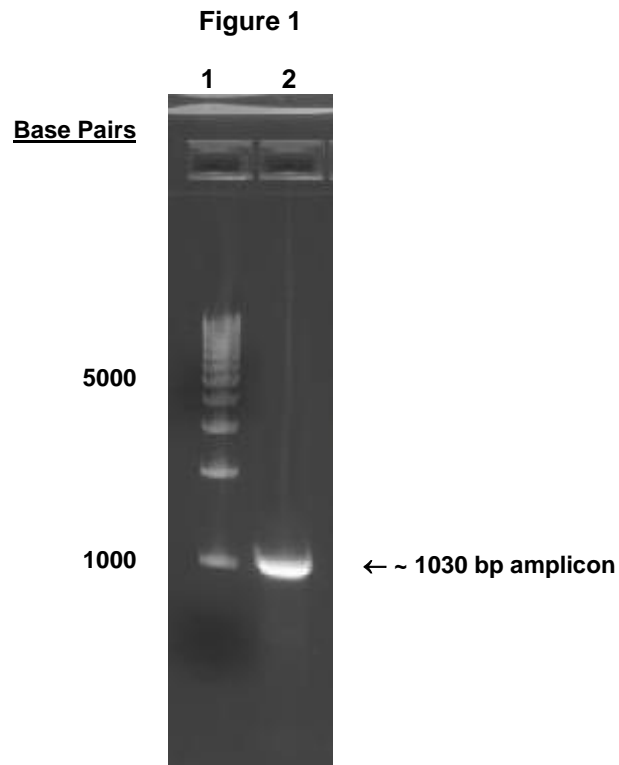
Title: Technical Manager, BEI Authentication or designee

ATCC[®], on behalf of BEI Resources, hereby represents and warrants that the material provided under this certificate has been subjected to the tests and procedures specified and that the results described, along with any other data provided in this certificate, are true and accurate to the best of ATCC[®]'s knowledge.

ATCC[®] is a trademark of the American Type Culture Collection.

You are authorized to use this product for research use only. It is not intended for human use.





Lane 1: BioRad EZ Load™ 1 kb Molecular Ruler
Lane 2: 25-fold dilution of NR-9679